

DON'T BRING HITCHHIKERS TO NEW ZEALAND

If you're sailing to New Zealand, don't bring hitchhikers on your boat.

You could unknowingly be carrying a variety of pests both above and below deck and on your hull that have the potential to harm human health, our primary industries and our unique environment.

What are hitchhikers?

Hitchhikers are pest plants, insects and animals that can come aboard berthed vessels undetected and travel around.

Some common hitchhiking pests previously found in New Zealand include ants, cockroaches, spiders, termites, lizards and marine pests that arrived as either bio-fouling growth on vessel hulls or hidden in water retained on a vessel.

YOU CAN HELP PREVENT THE SPREAD OF HITCHHIKING PESTS TO NEW ZEALAND

Marine pests on your vessel

To avoid accidentally introducing harmful marine pests, we recommend you:

- 1. Check and clean your hull:** Before departing your last port enroute to New Zealand, check your hull, keel and hull fittings for any fouling growth. If necessary, clean. Wash out places where marine organisms are able to live such as water inlets and outlets, anchor wells and cockpit areas (any places which retain seawater).

Areas on your boat that can harbour pests and which require special attention are:

- the hull, keel and stabilisers;
- intakes and outlets;
- propellers and shafts;
- bow thrusters;
- grates, rope guards;
- rudders, rudder shafts and casings, rudder recesses;
- anchors, anchor chains and anchor wells.

- 2. Check your anti-foul coating:** Ensure your anti-foul preparation is in good condition before setting sail. If necessary, we recommend slipping your vessel and renewing anti-foul preparation prior to departure.

- 3. Do not beach:** Do not clean your hull by beaching your boat or by cleaning it in the water unless the fouling is no more than a slime layer.



THE THREAT



Exotic marine pests can take over our natural ecosystems and displace native species, cause changes to habitats, and reduce biodiversity. They can also affect recreational and commercial fishing, tourism and human health.

For more information on pests and their impacts, visit:
www.biosecurity.govt.nz

June 2007

4. **Disposal:** Put fouling or removed sediment material into a container and dispose of it on land. Do not discharge such material into the sea or onto the coast.
5. **Clean on arrival:** If you were not able to clean before departure, have your vessel cleaned on arrival in New Zealand in a recommended haul-out facility which your biosecurity inspector will be able to direct you to. This is particularly important if you plan to remain in New Zealand waters for more than two weeks.

If you enter New Zealand waters with a heavily fouled hull you may be directed to an approved facility to have it cleaned at your expense.

Pests on board your boat

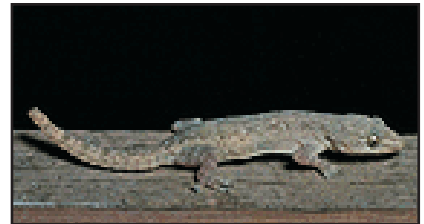
1. Check your boat for pests (insects or reptiles/animals) prior to leaving your last port and remove. Pay attention to decks, holds, galleys and other areas where food is found, and warm areas such as near engine rooms.
2. Check again enroute and if you find anything:
 - Contain if possible; and
 - Report to the biosecurity inspector on arrival.

SOME COMMON HITCHHIKERS

Exotic ants have been detected a number of times on vessels arriving into New Zealand, including red imported fire ants (*Solenopsis invicta*), notorious for their fiery sting. Fire ants have spread from their native South America to the southern and western USA, the Caribbean, Taiwan, China, Hong Kong and are under eradication in Australia.



Asian house geckos (*Hemidactylus frenatus*) have spread from Asia throughout the Pacific and other tropical areas. They are regularly found at the New Zealand border aboard commercial vessels and sea containers. They can harbour parasites that threaten native reptiles.



The sea squirt (*Styela clava*) is an invasive marine pest, originally from Asia, that has established in New Zealand and is a threat to our valuable environment and marine farming industry. It's widely believed this marine pest arrived here growing amongst fouling on the hull of a vessel.



Take the time to carry out a few simple precautions to help MAF Biosecurity New Zealand protect New Zealand from pests like these.

- For pests on board, contain if possible and report to the biosecurity inspector on arrival.
- For marine pests - keep your boat hull clean and anti-foul coating in good condition.

THE THREAT



Exotic pests, such as red imported fire ants, could impact human health and seriously harm New Zealand's economy and unique environment. Many insect pests can fly from a boat, meaning that they do not have to be physically transferred to the land to establish a population.

For more information on pests and their impacts, visit:
www.biosecurity.govt.nz

June 2007