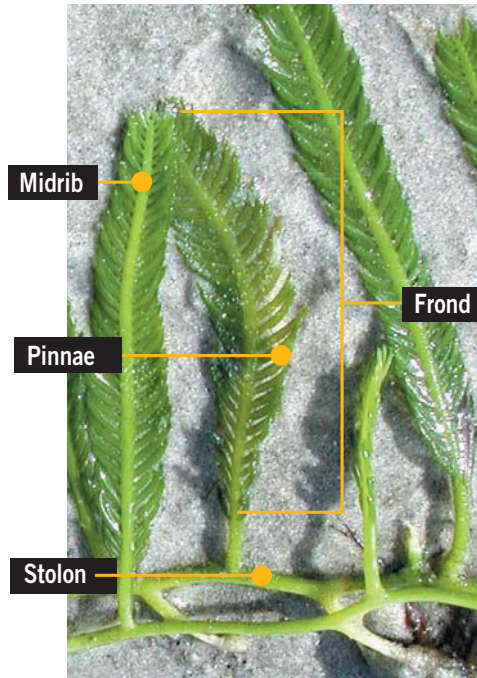


Caulerpa taxifolia

MARINE PEST GUIDE



Identifying features

- Bright green seaweed, with horizontal stolons (runners) up to 9 m long that give rise to many upright fronds.
- Fronds are flattened, with a smooth and distinct midrib.
- Leaf-like pinnules are closely packed with pointed, upcurving tips.

Where are they found?

- Grows well on a range of substrates including rock, sand and mud, and in a wide variety of temperatures, exposures and depths.
- Is not native to New Zealand, but is a common aquarium seaweed overseas.
- Infestations can occur if aquaria are emptied into the sea, drains or other waterways.

If you think you have seen this seaweed

- **Do not** attempt to pick it or remove it - tiny fragments can regrow into new plants.
- Contact Biosecurity New Zealand on 0800 80 99 66.

Caulerpa taxifolia

MARINE PEST GUIDE

Caulerpa taxifolia

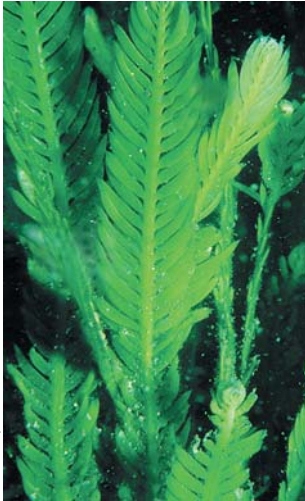
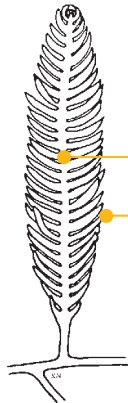


Photo courtesy of AIMS

What looks similar to it?

The New Zealand native seaweed *Caulerpa articulata*.



Illustrations: K Neill

To 15 cm (to 60 cm in deeper waters)

Smooth and distinct

Pointed, upcurving tips

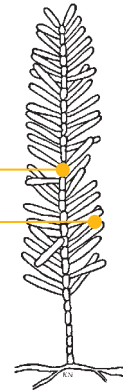
Flattened, two dimensional



Silver fern form (e.g. *Caulerpa flexilis*)



Rimu form (e.g. *Caulerpa brownii*)



Height To 25 cm

Midrib Bead-like

Pinnae Rounded tips

Frond Three dimensional



Beaded form (e.g. *Caulerpa geminata* and *Caulerpa racemosa*)

Caulerpa articulata



June 2006