

NEED FOR ETHICAL APPROVAL

Step 1: Does the work involve an animal?

Is the creature a living non-human vertebrate
(includes mammalian foetuses in second half of
gestation, avian and reptilian pre-hatched young
in second half of development and marsupial
pouch young)?

NO

Is it a living octopus, squid, crab,
lobster or crayfish?

YES

Go to Step 2

NO

Part 6 does not apply

Step 2: Is the work research, testing or teaching (RTT)?

Is it research?

Is it:

- Investigative work
- Experimental work
- Diagnostic work

YES

NO

Is it testing?

Is it:

- Toxicity testing work
- Potency testing work

YES

NO

Is it to produce antisera or other
biological products?

YES

NO

Is it teaching?

YES

NO

Part 6 does not apply
Part 1 applies

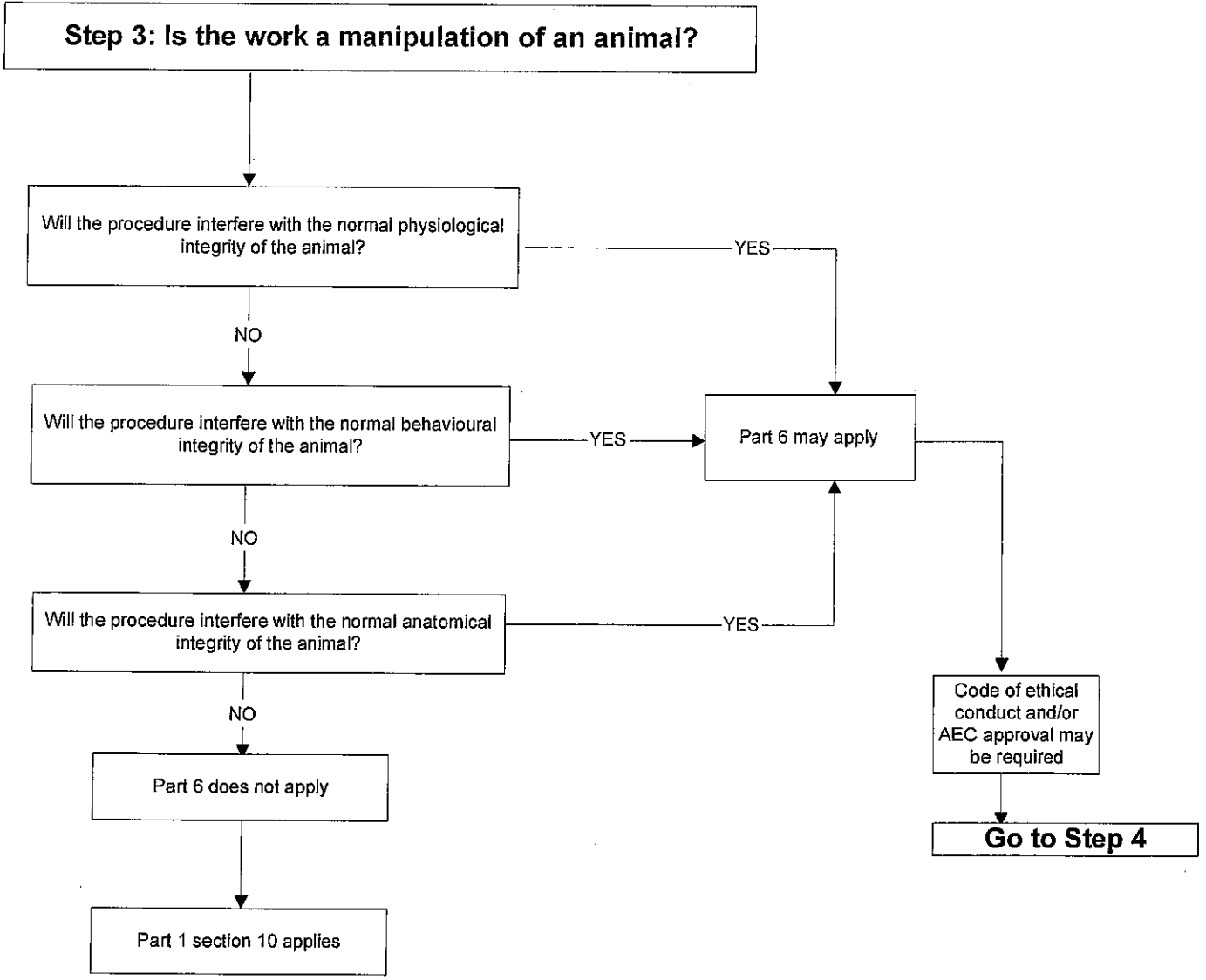
Go to Step 3

Note: Excluded from this definition are:

- certain manipulations carried out on an animal in the immediate care of a veterinarian, and certain procedures carried out for breeding, marking, capturing, translocation or trapping animals
- see section 5(2) - (4)

Obligation to provide for physical, health and
behavioural needs of the animal - section 10

The contribution of flowcharts developed by
Neil Wells and the NZ Association of Science
Educators is acknowledged



Step 4: What will happen to the animal?

Will the animal be **deliberately** deprived of usual care?

NO

Will the animal be **deliberately** subjected to a procedure that is unusual or abnormal?

NO

Part 6 does not apply

Part 1 section 10 applies

YES

Will the animal be exposed to any:

- parasite
- micro-organism
- drug
- chemical
- biological product
- radiation
- electrical stimulation
- environmental condition

or

- enforced activity
- enforced nutrition
- enforced restraint
- surgical intervention

NO

YES

Go to Step 5

YES

