

A background image showing a dense bouquet of various cut flowers and green foliage. The flowers include roses in shades of yellow, orange, and pink, as well as purple and white flowers. The overall appearance is that of a fresh, colorful floral arrangement.

MAF Biosecurity New Zealand
Phytosanitary Compliance Programme
For the Export of
Cut Flowers and Foliage to the USA
2010 - 2011

Amendment Record

Amendment No.	Date:	Nature of amendment:	Approved by:
1.	14 December 2009	<ol style="list-style-type: none"> 1. Change date and document control 2. Include indoor grown crops into the programme 3. general tidy up of the programme 	LP
2.	July 2010	<ol style="list-style-type: none"> 1. addition of codes for Pieris and Berzelia in the crop reference list. Appendix 3. 2. amendment of impact of nil detection of residues 3. general tidy up of the compliance programme 	LP
3.	August 2010	<ol style="list-style-type: none"> 1. Format changes and general tidy up of the compliance programme 	LP
4.			
5.			
6.			

Export Compliance Programme – Outdoor Cut Flowers and Foliage to the USA

Contents

1. Objective	5
2. Introduction	5
3. Overview of the Export Compliance Programme – Indoor Cutflowers and Foliage to the USA.....	8
4. Overview of the Export Compliance Programme – Outdoor Cut Flowers and Foliage to the USA.....	9
5. Requirements of growers of indoor produced cut flowers and foliage.....	10
5.1 Registration requirements	10
5.2 Inspection of host plants grown in greenhouse/screenhouses by your IVA .	11
5.3 Greenhouse/screenhouse security and inspection	11
5.4 Harvest requirements for indoor produced crops	11
5.5 Records management for indoor produced crops.....	11
6. Requirements of growers of outdoor produced cut flowers and foliage.....	12
6.1. Registration requirements	12
7. Pest risk management plans for outdoor produced crops	13
7.1 Option 1: Field control programme	13
7.1.1. Impact of nil residue detection.....	13
7.2 Option 2: Post harvest treatments	14
8. Harvest requirements for outdoor produced crops	15
9. Records management for outdoor produced crops	16
10. Packhouse / storage facility operator requirements for outdoor grown crops.....	17
10.1 Packhouse / storage facility application for registration	17
10.2 Packhouse and storage facility verification and traceability requirements....	18
11. Phytosanitary inspection and Post Inspection Product Security (PIPS) for outdoor grown crops.....	19
12. Targeted pesticide residue sampling of cut flowers and foliage for outdoor produced crops	20
12.1 Who is responsible for collecting the samples?.....	20
12.2 Size of the sample	20
12.3 Lab reports.....	20
12.4 Impact of nil residue detection for crops undergoing a pest management programme	21
12.5 Impact of nil residue detection for crops subject to post harvest pest management.....	21
12.6 Expenses incurred from the random sampling process	21
13. Requirements for freight forwarders and exporters	22
13.1 Freight forwarder application for registration.....	22
13.2 Exporter application for registration for outdoor grown crops	22
14. Freight forwarder and exporter verification and traceability requirements.....	23
15. Phytosanitary Inspection and Post Inspection Product Security (PIPS)	23
16. Targeted residue sampling of cut flowers and foliage grown outdoors.....	24
17. Independent Verification Agency (IVA) Requirements	25
17.1 IVA registration with MAFBNZ.....	25
18 VA programme activities.....	25
18.1 Registration requirements	25

18.2	Inspection of host plants grown in greenhouse/screenhouses	25
18.3	Greenhouse/screenhouse security and inspection	25
18.4	Verification of grower compliance with field pest control measures and post harvest treatment facilities for outdoor produced crops	26
18.5	Confirmation of packhouse, freight forwarder and exporter requirements for outdoor grown crops	26
18.6	Post inspection product security	27
18.7	Product eligibility transfer documents.....	27
18.8	Non Compliance Contingency	27
19	Contingency measures when Non-Compliant product is intercepted in USA	27
20	Key contacts.....	29
Appendix 1.	References	30
Appendix 2.	Definitions	31
Appendix 3.	Crop type reference list for production site identification code.....	33
Appendix 4.	Application for grower and production site registration.	34
Appendix 5.	Pest Risk Management Plan <i>Example only</i>	38
Appendix 6.	Application for packhouse / storage facility registration.	41
Appendix 7.	Application for freight forwarder registration.	45
Appendix 8.	Application for exporter registration.	49
Appendix 9.	Application for IVA registration.....	53

1. Objective

Provision of light brown apple moth (*Epiphyas postvittana*) additional declarations for export certification of indoor and outdoor grown cut flowers and foliage to the USA.

The additional declaration to be provided to cut flowers/foliage compliant with this programme's requirements for;

- Indoor grown crops is:

"The (flowers/garlands/wreaths/greenery) were grown in greenhouses or screenhouses inspected and found free of Light brown apple moth (*Epiphyas postvittana*)."

And

"The consignment was inspected and found free of LBAM."

- Out door grown crops the additional declaration is:

"The cut flowers/greenery in this shipment were produced under the MAFBNZ Exports Phytosanitary Compliance Programme for light brown apple moth for the export of cut flowers and foliage to the United States"

2. Introduction

This Compliance Programme (CP) forms the basis of an integrated system's approach to meet the light brown apple moth (LBAM) *Epiphyas postvittana* phytosanitary requirements for the export of cut flowers and foliage to USA. This document outlines the requirements to be met by those involved in the cut flower and foliage export pathway, from the point of production to the point of export from New Zealand.

The compliance programme is separated into five sections to address the roles of the various participating parties.

- Growers of cut flowers and foliage,
- Packers and their storage facilities,
- Freight forwarders and their storage facilities,
- Exporters and their storage facilities
- The participating Independent Verification Agency (IVA)

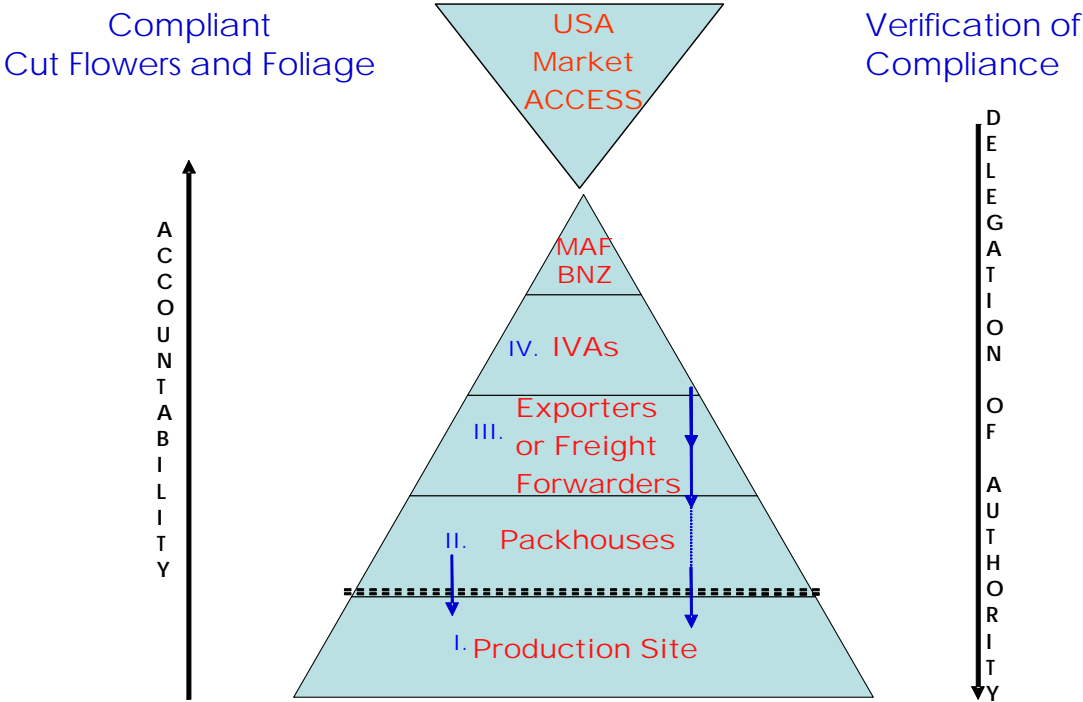
The compliance programme addresses USA's quarantine requirements for the importation of cut flowers and foliage, to ensure the product is free of LBAM.

IMPORTANT NOTES:

1. This programme represents the minimum requirements for the control of LBAM in cut flowers and foliage exported from New Zealand to the USA.
2. All individuals and organisations will need to meet their Compliance Programme requirements before any MAF phytosanitary certification will be issued.

This Compliance Programme vertically integrates the production, packing, storage and export phases within the product pathway for export to USA (Figure 1).

Figure 1: Model for the phytosanitary compliance programme for the export of cut flowers and foliage to the USA



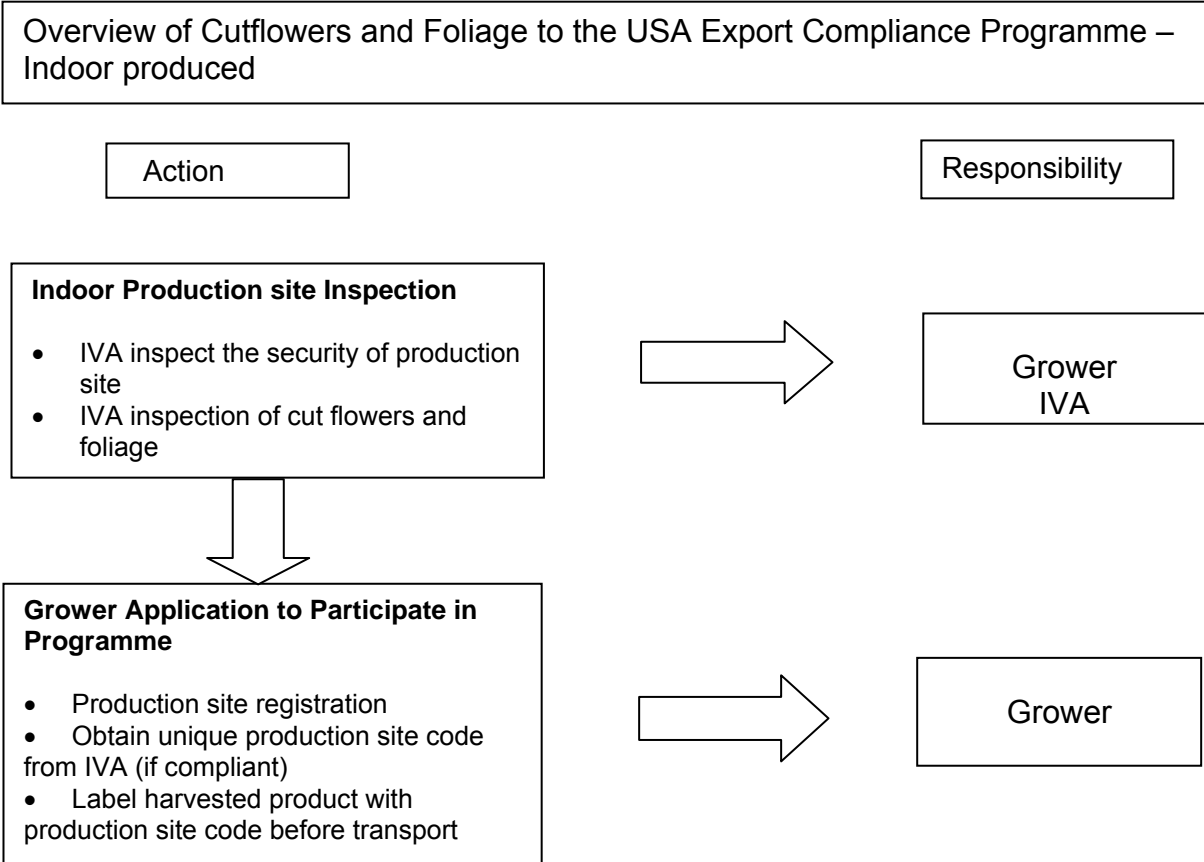
Each phase within this programme can only be successfully completed if the previous phases below have been conducted to the required specification. This method of operating a compliance programme places emphasis on the light brown apple moth pest management at production site level where it can be best controlled.

This programme:

- Specifies the packing, freight forwarding and exporting organisations’ role in assessing how best to manage the risks associated with obtaining cut flowers and foliage from production sites.
- Specifies that packing, freight forwarding and exporting organisations may only source, transport, store and export cut flowers and foliage from MAF compliant production sites.
- Requires all participants which make up the pathway from production through to export to be registered and issued a unique MAF registration code.
- Has been designed to integrate the production, phytosanitary inspection packing, freight forwarding and exporting aspects of the cut flower and foliage industry

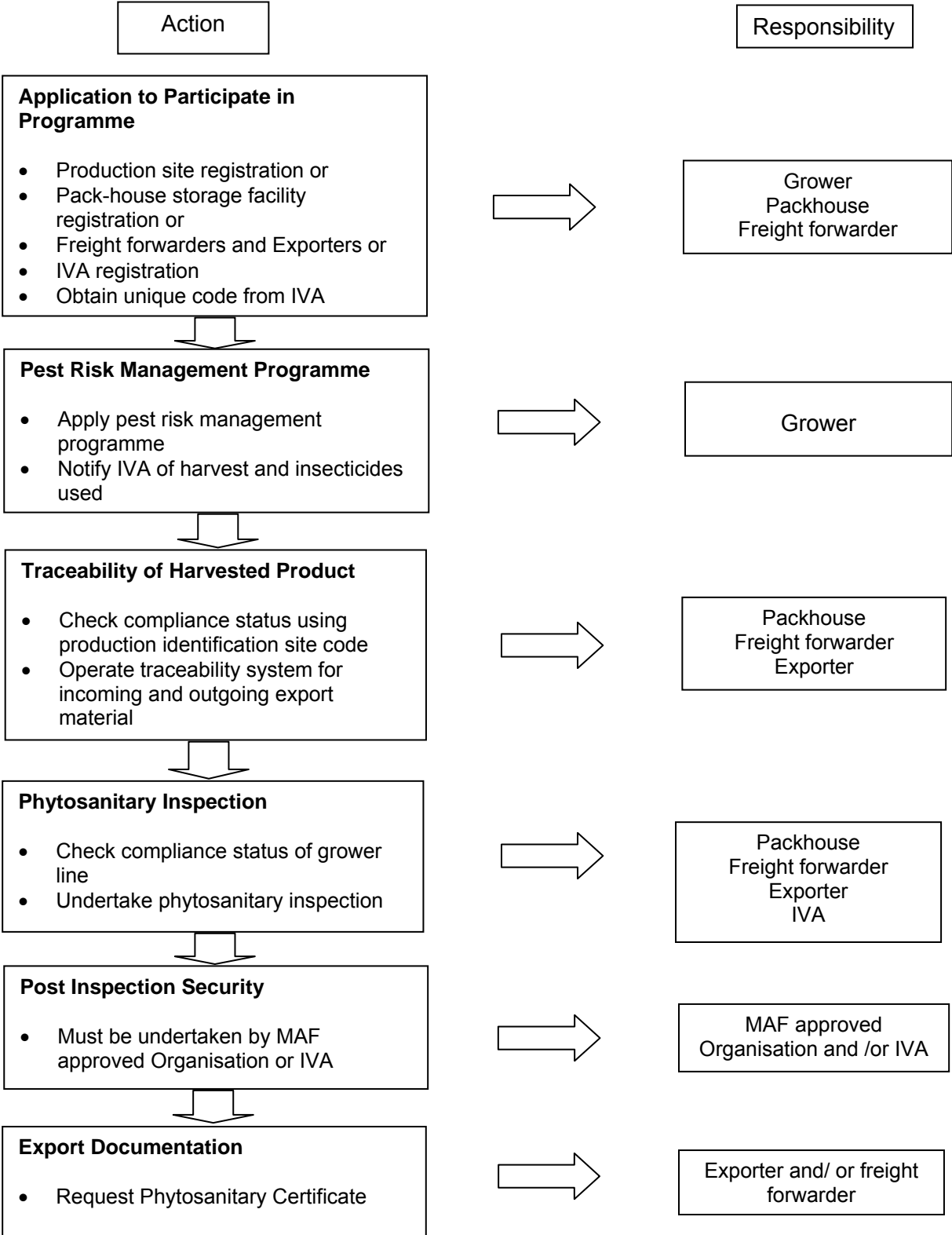
- Facilitates and minimises the risk of failure, packing, freight forwarding, storage and exporting organisations.
- Enables activities that will lead to the provision of MAF phytosanitary certification.
- Requires packing, freight forwarding, storage and exporting organisations' overall performance to be verified by IVAs.

3. Overview of the Export Compliance Programme – Indoor Cutflowers and Foliage to the USA



4. Overview of the Export Compliance Programme – Outdoor Cut Flowers and Foliage to the USA

Overview of Cutflowers and Foliage to the USA Export Compliance Programme – Outdoor produced



5. Requirements of growers of indoor produced cut flowers and foliage

5.1 Registration requirements

- Complete the application for registration (refer Appendix 4)
- Identify the IVA that will provide all of your phytosanitary services

Note: MAFBNZ requires verification of product from a registered production site at the various stages of packing, storage, and export. To achieve this, growers must use a single IVA for all of their verification services. As far as possible, growers should also use the same IVA that is used by packhouses, storage facilities, and exporters handling product from their registered production sites. Where this is not possible, IVAs should consider the use of product eligibility documentation at any stage where verification responsibility is transferred to another IVA to ensure traceability of compliant product.

- Specify the species being grown in each production site for this programme;
- Produce a map which clearly identifies the location of the production sites which are being registered for export under this programme and the location within the production site of the species being grown for export

Note: This map must contain enough detail for the IVA to clearly identify these areas.

- Complete and sign the application form
- Submit the application for registration to your nominated IVA for verification and approval

Note: One registration form may include multiple crop types being grown on one production site

- Applications for registration must be made at least 14 days prior to intended harvest date; registration is valid for 12 months.

Note: Growers are encouraged to attend a pre-season “registration workshop” organised by their specific industry sector.

- Your IVA will allocate a production site identification code on confirmation that your production site is compliant with the programme (refer Appendix 2).

Note:

- Compliance requires verification by the IVA of the security of your production greenhouse/screenhouse and host plants inspected and found free of LBAM
- Production site registrations and compliance status will be listed on the MAFBNZ website.

- Growers intending to voluntarily withdraw production sites from the programme must notify the IVA in writing prior to withdrawal.

5.2 Inspection of host plants grown in greenhouse/screenhouses by your IVA

- Before registration by the IVA is completed plants grown in the secure greenhouses/screenhouses must be inspected to verify freedom of LBAM.
- Inspection of host plants must be conducted only by an IVA and involves a random sample of 600 plants within the production site designated for registration

5.3 Greenhouse/screenhouse security and inspection

When an IVA representative inspects the host plants inside a greenhouse/screenhouse they will also be inspecting to verify the security of the production site. The IVA's are verifying

- The screenhouse or greenhouse is fully enclosed i.e. with four walls, a roof and doors, the cladding on the four walls and roof must be intact
- Side vents are to be sealed with an intact insect screen or shade cloth attached
- The top vent may remain open
- A metre wide strip around the screenhouse/greenhouse is required to be plant and weed free

5.4 Harvest requirements for indoor produced crops

Document and maintain a traceability system that includes records of;

- Harvest dates;
- Production sites;
- Volumes harvested (number of stems or crates);
- Packhouses supplied.

5.5 Records management for indoor produced crops

Growers are required to maintain the following records for a period of 2 years and make available to the IVA for checking;

- A copy of the map used for registration into this programme.
- Pest risk management plan and spray diary, if applicable
- Traceability records as specified

6. Requirements of growers of outdoor produced cut flowers and foliage

6.1. Registration requirements

- Complete the application for registration (refer Appendix 4):
- Identify the IVA that will provide all of your phytosanitary services

Note: MAFBNZ requires verification of product from a registered production site at the various stages of packing, storage, and export. To achieve this, growers must use a single IVA for all of their verification services. As far as possible, growers should also use the same IVA that is used by packhouses, storage facilities, and exporters handling product from their registered production sites. Where this is not possible, IVAs should consider the use of product eligibility documentation at any stage where verification responsibility is transferred to another IVA to ensure traceability of compliant product.

- Specify the species being grown in each production site for this programme;
- Produce a map which clearly identifies the location of the production sites which are being registered for export under this programme and the location within the production site of the species being grown for export.
- Complete and sign the application form;
- Submit the application for registration to your nominated IVA for verification and approval.

Note: One registration form may include multiple crop types being grown on one production site.

- Applications for registration must be made at least 14 days prior to intended harvest date, the registration is valid for 12 months

Note: Growers are encouraged to attend a pre-season “registration workshop” organised by their specific industry sector.

- Your IVA will allocate a production site identification code on confirmation that your production site is compliant with the programme (refer Appendix 2).

Note: Compliance requires verification by the IVA of your risk management programme

- Production site registrations and their compliance status will be listed on the MAFBNZ website.
- Growers intending to voluntarily withdraw production sites from the programme must notify the IVA in writing prior to withdrawal.

7. Pest risk management plans for outdoor produced crops

Growers are required to document and implement a pest risk management plan that will be applied to crops for export for control light brown apple moth within either the production phase or post harvest phase to ensure that consignments submitted for phytosanitary inspection are free from light brown apple moth. The risk management may comprise any one, or combination of, the following measures:

Option 1: Field control programme (insecticide sprays verified through IVA foliage sampling and residue testing).

Option 2: Post harvest treatments (verified through a treatment facility check and foliage sampling and residue testing) Refer section 12.

Note: An example template for a pest risk management programme is provided at Appendix 5. The template is for your reference and adoption as appropriate.

7.1 Option 1: Field control programme

Where this option is selected, pesticides included in field control programmes must have a label claim for use against light brown apple moth or leaf rollers:

- Apply field control measures in accordance with label directions;
- Record in a spray diary the details of agrichemical applications:
 - Date applied;
 - Product, active ingredient, and rate of application;
 - Species or area of the production site that the agrichemicals have been applied to (if not the entire production site);
 - Name and signature of applicator.
- Retain agrichemical purchase records and spray diaries for verification by the IVA if needed;
- A registered grower with more than one production site within the boundary of their property may elect to only have one sample taken representing their multiple production sites. Where a grower exercises this option, the IVA inspector is to select one production site to collect the sample for analysis.

Note: A sample must be taken from each different species of cut flower or foliage utilising a field control programme.

- Advise the IVA of the pesticide used in the risk management programme so they can ensure the correct residue test is done;
- Allow the IVA access to the production sites to take samples for verification of pesticide application through residue testing.

7.1.1. Impact of nil residue detection

- The grower will not be registered into the compliance programme

- If the grower wants to register into the compliance programme the grower must conduct a pest management programme and have the production sites re-sampled.

Note: If the production site includes more than one production site of plants, in this case each individual production site will have to be residue tested

Note:

1. Cut flowers/foilage operating under this option will be subjected to targeted residue sampling at the phytosanitary inspection location and sent for residue testing (Refer section 12).
2. Failure to detect pesticide residues during the targeted residue sampling stage will result in that grower production site being suspended from the programme.

Note: the grower may re-apply to be part of the compliance programme and progress through the registration process. Therefore the IVA will have to visit the production site and take plant material samples from the designated sites.

3. After all forms of pest management and prior to export, phytosanitary inspection must be undertaken.

7.2 Option 2: Post harvest treatments

Where this option is selected, post harvest treatments may include fumigants and pesticide dips which have label claims or efficacy data for treatment of light brown apple moth or leaf rollers.

If you have selected this option for pest risk management:

- Allow the IVA access to the post harvest treatment facility to verify the following is in place;
- The facility is in place and suitable for the activity,
- Equipment associated with the post harvest treatment process is on hand,
- Purchase records or the supplies of pesticides are available at the facility.

Note: This IVA verification is to be undertaken as part of the registration process and must be completed before treatments are undertaken.

- Apply the post harvest control measures in accordance with label directions.
- Ensure treated product is not mixed with product awaiting treatment.
- Record the following details of the agrichemical applications in the likes of a diary:
 - Date applied.
 - Product, active ingredient, and rate of application.
 - Species of cut flower/foilage that the agrichemicals have been applied to.
 - Name and signature of applicator.
- Retain agrichemical purchase and application records for verification by the IVA if needed.

- Advise the phytosanitary inspection location of the pesticide used in the risk management programme so they can ensure the correct residue test is done.

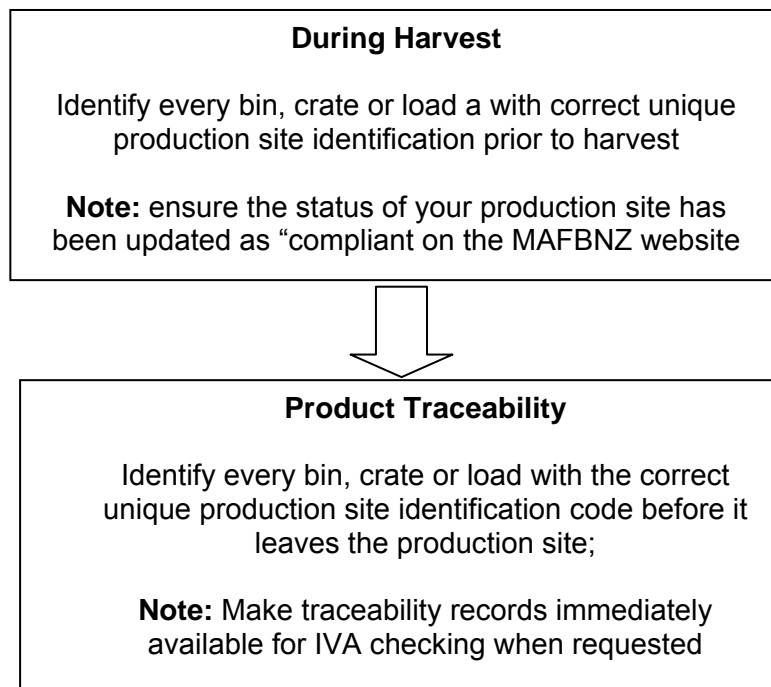
Note:

1. Cut flowers/foilage operating under this option will be subjected to random sampling at the phytosanitary inspection location and sent for residue testing.
2. Failure to detect pesticide residues will result in that post harvest treatment location being suspended from the programme.
3. Following all forms of pest management and prior to export, phytosanitary inspection must be undertaken.

8. Harvest requirements for outdoor produced crops

Document and maintain a traceability system that includes records of:

- Harvest dates.
- Production sites.
- Volumes harvested (number of stems or crates).
- Packhouses supplied.



9. Records management for outdoor produced crops

Growers are required to maintain the following records for a period of 2 years and make available to the IVA for checking

- A copy of the map used for registration into this programme.
- Pest risk management plan and spray diary.
- Traceability records as specified.

10. Packhouse / storage facility operator requirements for outdoor grown crops

10.1 Packhouse / storage facility application for registration

All packhouses / storage facilities handling cut flowers and foliage to be exported under this programme must apply to their IVA for registration and comply with programme requirements.

- Complete the application for packhouse / storage facility registration (Appendix 6) and submit to the IVA.
 - Identify the IVA that will provide all of your phytosanitary services
 - Packhouses / storage facilities must apply for registration at least 14 days prior to handling product for export under this programme.
 - Indicate on the registration form the MAFBNZ approved organisation that will undertake the pre-export phytosanitary inspection.
 - Obtain a unique MAFBNZ packhouse or storage facility identification code from the IVA.
 - Confirm your compliance status on the MAFBNZ website.
 - Packing / storage facilities voluntarily withdrawing from the programme must notify the IVA prior to their withdrawal.

- Note:**
1. Registration is valid for 12 months
 2. Packers are encouraged to attend a pre-season “registration workshop” organised by their specific industry sector.

10.2 Packhouse and storage facility verification and traceability requirements

All harvested cut flowers and foliage must be traceable at all stages of the export pathway, from production sites through to the point of export from New Zealand

Packing

- confirm every bin, crate or load received has the correct unique production site identification code
- ensure codes are clearly stated on all export packages

Note: 1. Any container, bin or load that is not correctly identified is not eligible for the programme
2. Ensure the supplying production sites are eligible for export under this programme (by checking production status on the MAFBNZ website)

Inventory of Complaint Product

Complete a product traceability inventory control system that includes records of the following:

By packing date the

- production sites from which cut flowers and foliage are being sourced
- MAFBNZ registered facilities where packed cut flowers and foliage for export to the USA will be stored prior to export
- MAFBNZ registered exporters that you are supplying cut flowers and foliage to
- If post-harvest treatments are undertaken at the packhouse record the treatment date, chemicals used, rate of application and the applicator details as per 4.2.2.
-

- Cut flowers and foliage from different grower production sites cannot be amalgamated unless MAFBNZ approved inline phytosanitary inspection ensures compliance of each lot (Section 15)
- During packing ensure that waste plant material is contained or removed from the packing area to prevent possible pest contamination of product being packed.
- Ensure appropriate control measures have been taken to eliminate and maintain freedom from live plant pests within the packhouse.
- If post-harvest treatments are to be undertaken at the packhouse, ensure they are applied as per Section 7.2
- Cut flowers and foliage from approved production sites may not be packed at the same time as that from non-approved production sites.
- Ensure that packed product output from production sites registered in this programme is clearly identified with the correct unique production site identification code and packhouse code.
- Ensure that records from packhouses participating in the programme have been completed correctly and are available for IVA verification if needed.

11. Phytosanitary inspection and Post Inspection Product Security (PIPS) for outdoor grown crops

Phytosanitary inspection must be undertaken by a MAFBNZ approved organisation at either the packhouse, exporter or freight forwarder premises prior to individual grower lots being consolidated into an export package/consignment.

- Where the packhouse is a MAFBNZ approved organisation they can conduct phytosanitary inspections, sampling for residue testing and post inspection security in accordance with the MAFBNZ approved organisation's system.
- Where a registered packhouse in this programme is not a MAFBNZ approved organisation, phytosanitary inspection, sampling for residue testing, verification of traceability and post inspection product security must be undertaken by either;
 - an IVA who has authority to undertake these activities; or
 - a MAFBNZ approved organisation that has authority to undertake these activities.
- Operate post inspection security measures for packed cut flower and foliage to prevent pest contamination during transport from packhouse to storage facility/exporter, (e.g. enclosed within curtain sided trucks or pest proof containers, etc.). Refer Section 3.8.3.2 of the MAFBNZ Standard Organisation Requirements.
- Ensure that the packaging of inspected and passed for USA packed cut flowers and foliage indicates compliance with USA requirements.

12. Targeted pesticide residue sampling of cut flowers and foliage for outdoor produced crops

Frequency of the targeted residue sampling for cutflowers and foliage grown outdoors

- One in ten export consignments per exporter (10% of export consignments to the USA) will be subject to targeted sampling at the point of phytosanitary inspection.
- One grower will be targeted for sampling within the 10% of targeted export consignments (note: over time as many growers as possible will be required to be tested).
- Where a grower has been selected more than twice in different export lines, an alternative grower may be selected (if available).

Note: Grower lines randomly sampled for residue testing will not be delayed from exporting while the testing is being undertaken.

12.1 Who is responsible for collecting the samples?

- The person who conducts the phytosanitary inspection, (e.g. the competent phytosanitary inspector working within a MAF approved system or the nominated IVA conducting end point inspection).
- The person responsible for taking the samples are to maintain a register of growers who have been sampled and the date the sample is taken - this register may be part of an audit by the IVA or MAFBNZ.
- Your IVA can supply "sample packs/directions" to phytosanitary inspectors tasked to collect the random samples on request.

Note: Sample testing can only be conducted at an IANZ accredited laboratory undertaking residue analysis.

12.2 Size of the sample

- The amount required for the sample is 10 grams, this may be either;
 1. one stem or;
 2. parts of stems or leaves from a number of stems in the grower lot, up to 10 grams only

Note: Detection of residues requires at least 10 grams of plant material

12.3 Lab reports

Lab reports will be sent to your IVA, who will advise the "sampler" and the grower as appropriate.

Note: Impact on the sampled consignment

- Export consignments will not be held up during the sampling and testing process/time being taken. Sampled consignments will be eligible for export to the USA as per the usual process.

12.4 Impact of nil residue detection for crops undergoing a pest management programme

- The organisation concerned will be suspended from the compliance programme immediately.
- The organisation concerned details will be removed from the MAFBNZ website
- The organisation concerned may re-apply to be part of the compliance programme and progress through the registration process as if never previously registered. Therefore, the IVA must visit the production site and take plant material samples from the designated sites.
- Within four weeks of re-registration a second 100 gram sample must be collected from the production site by your nominated IVA

Note: If the nil detection is identified at the end of the export season the above process will be rolled over to the following export season.

12.5 Impact of nil residue detection for crops subject to post harvest pest management

- The grower will be suspended from the compliance programme immediately.
- The grower details will be removed from the MAFBNZ website
- The grower may re-apply to be part of the compliance programme and progress through the registration process as if never previously registered. Therefore, the IVA must visit the site where the post harvest pest management occurs and verify pest management is taking place by reviewing documentation and the facilities where the pest management is conducted.
- Within four weeks of the first visit second verification visit must be completed by the IVA.

Note: If the nil detection is identified at the end of the export season the above process will be rolled over to the following export season.

12.6 Expenses incurred from the random sampling process

- The costs associated with random sampling are to be met by the grower or exporter of the consignment being sampled.

Note: Where there is no pesticide requested for analysis, the labs pesticide searching costs will be greater.

13. Requirements for freight forwarders and exporters

13.1 Freight forwarder application for registration

All freight forwarders handling cut flowers and foliage to be exported under this programme must apply to their IVA for registration and comply with programme requirements.

- Note:**
1. Registration is valid for 12 months
 2. Freight forwarders are encouraged to attend a pre-season “registration workshop” organised by their specific industry sector
- Freight forwarders voluntarily withdrawing from the programme must notify the IVA prior to their withdrawal
 - Complete the application for freight forwarder registration (Appendix 7) and submit to the IVA.
 - Identify the IVA that will provide all of your phytosanitary services
 - Operators must apply for registration at least 14 days prior to handling product for export under this programme.
 - Indicate on the registration form, if phytosanitary inspection is to be carried out at your premises and the MAFBNZ approved organisation that will undertake the inspection.
 - Obtain a unique MAFBNZ freight forwarder identification code from the IVA.

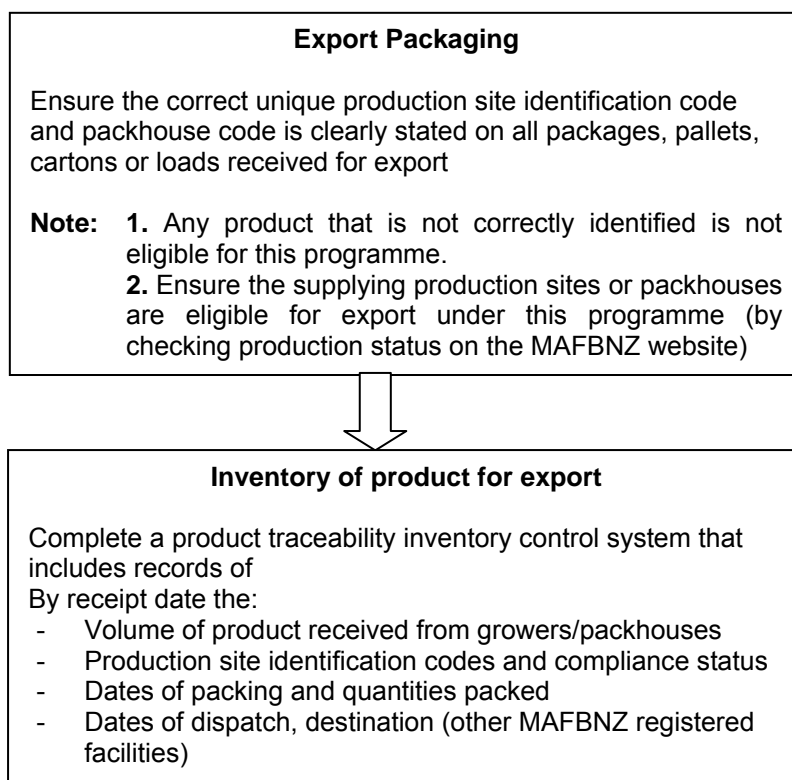
13.2 Exporter application for registration for outdoor grown crops

All exporters handling cut flowers and foliage to be exported under this programme must apply to their IVA for registration and comply with programme requirements.

- Note:**
1. Registration is valid for 12 months
 2. Exporters are encouraged to attend a pre-season “registration workshop” organised by their specific industry sector
- Exporters voluntarily withdrawing from the programme must notify the IVA prior to their withdrawal
 - Complete the application for exporter registration (Appendix 8) and submit to the IVA.
 - Identify the IVA that will provide all of your phytosanitary services
 - Operators must apply for registration at least 14 days prior to handling product for export under this programme.
 - Indicate, on the registration form, if phytosanitary inspection is to be carried out at your premises and the MAFBNZ approved organisation that will undertake the inspection.
 - Obtain a unique MAFBNZ exporter identification code from the IVA.

14. Freight forwarder and exporter verification and traceability requirements

All harvested cut flowers and foliage to the USA must be traceable at all stages of the export pathway from production sites, through to the point of export from New Zealand.



- If post-harvest treatments are to be undertaken at the freight forwarder or exporter premises ensure it is applied as per Section 7.2.
- Ensure that records from packhouses participating in the programme have been completed correctly and are available for IVA verification if needed.

15. Phytosanitary Inspection and Post Inspection Product Security (PIPS)

Phytosanitary inspection must be undertaken by a MAFBNZ approved organization at either the packhouse, exporter or freight forwarder premises prior to individual grower lots being consolidated into an export package/consignment.

- Where the freight forwarder or exporter is a MAFBNZ approved organisation they can conduct phytosanitary inspections, sampling for residue testing and post inspection product security in accordance with the MAFBNZ approved organisation's system.
- Where a registered freight forwarder or exporter in this programme is not a MAFBNZ approved organisation, phytosanitary inspection, sampling for residue testing, verification of traceability and post inspection product security must be undertaken by either;

- an IVA who has authority to undertake these activities; or
 - a MAFBNZ approved organisation that has authority to undertake these activities.
-
- Operate post inspection product security measures for packed cut flower and foliage to prevent pest contamination during transportation, (e.g. enclosed within curtain sided trucks or pest proof containers, etc.). Refer Section 3.8.3.2 of the MAFBNZ Standard Organisation Requirements.
 - Ensure that the packaging of inspected and passed for USA packed cut flowers and foliage indicates compliance with USA requirements

Note: Grower lines randomly sampled for residue testing will not be delayed from exporting while the testing is being undertaken.

16. Targeted residue sampling of cut flowers and foliage grown outdoors

Refer Section 12.

17. Independent Verification Agency (IVA) Requirements

IVAs are to use this programme in conjunction with their MAFBNZ authorised IVA procedures.

17.1 IVA registration with MAFBNZ

IVAs intending to provide services within this programme are to register annually with MAFBNZ and nominate a person within their organisation who is responsible for communication with MAFBNZ regarding their implementation of this programme (Appendix 9).

18 VA programme activities

18.1 Registration requirements

IVAs must:

- Ensure all growers, packhouse / storage facility operators, freight forwarders, and exporters who wish to participate within the programme complete and sign the application form and meet the programmes requirements as appropriate.
- Issue (on behalf of MAFBNZ) a unique identification code for each production site, packhouse/ storage facility, freight forwarder and exporter.
- Forward to MAFBNZ an updated register of participants approved for registration.
- Provide registration and compliance status information to MAFBNZ (as per the agreed format and submission process) for posting on the MAFBNZ web site within the following timeframes:
 - Registration of production sites - within 4 working days of the completion of verification of registration applications;
 - Packing and storage facilities - within 2 working days of the application being verified as compliant with the programme requirements.

18.2 Inspection of host plants grown in greenhouse/screenhouses

- Before registration is completed plants grown in the secure greenhouses/screenhouses must be inspected to verify freedom of LBAM.
- Inspection of host plants must be conducted only by an IVA and involves a random sample of 600 plants within the production site designated for registration

18.3 Greenhouse/screenhouse security and inspection

The IVA is to verify

- The screenhouse or greenhouse is fully enclosed i.e. with four walls, a roof and doors, the cladding on the four walls and roof must be intact

- Side vents are to be sealed with an intact insect screen or shade cloth attached
- The top vent may remain open
- A metre wide strip around the screenhouse/greenhouse is required to be plant and weed free

18.4 Verification of grower compliance with field pest control measures and post harvest treatment facilities for outdoor produced crops

IVAs must:

- At least two weeks before harvest for export receive a registration form from the grower
- Visit the production site and:
 - Obtain from the grower information about the pesticide used;
 - Collect at least 100 grams of leaf from each flower type on each production site notified for export and;
 - Dispatch the sample to an IANZ accredited Laboratory along with a request to test for the pesticide(s) used as a field control measure.

Where a packhouse, freight forwarder or exporter is undertaking post-harvest treatments, verify that the following is in place;

- The facility is in place and suitable for the activity;
- Equipment associated with the post harvest treatment process is on hand;
- Purchase records or the supplies of pesticides are available at the facility.

Note: This IVA verification is to be undertaken as part of the registration process and must be completed before treatments are undertaken.

18.5 Confirmation of packhouse, freight forwarder and exporter requirements for outdoor grown crops

For packhouses, freight forwarders and exporters that are MAF approved organisations:

- Confirm programme requirements are contained within the organisation's documented system;
- Within the scheduled scope of audits, verify that programme requirements are being implemented.

For packhouses, freight forwarders and exporters that are not MAF approved:

- Verify that the packhouse is registered into the compliance programme.
- At the time of each phytosanitary inspection, verify traceability of the consignment or lot being inspected.

Where a MAFBNZ approved organisation is undertaking pre-export phytosanitary inspections within non-approved MAFBNZ registered packing facilities,

- include these activities within the scope of scheduled audits of the approved organisation;

18.6 Post inspection product security

Where an IVA undertakes phytosanitary inspection in a MAFBNZ registered non-approved packhouse, the IVA must take on responsibility within its own MAFBNZ approved procedures for post inspection product security until the time of export or until responsibility can be passed and is to another MAFBNZ approved organisation, as per MAFBNZ Export Certification Standard: Technical Requirements: Phytosanitary Inspection: Section 2.7.

18.7 Product eligibility transfer documents

Where product passes between MAFBNZ registered participants using different IVAs and verification responsibility is transferred to another IVA, issue product eligibility documentation to the IVA undertaking certificate verification activities.

18.8 Non Compliance Contingency

Where the IVA detects non-compliance to the programmes requirements the IVA is to:

- Notify MAFBNZ as per an “event” report, and
- Update the programme’s MAFBNZ register of production sites, packhouses, freight forwarders and exporters.

19 Contingency measures when Non-Compliant product is intercepted in USA

Upon confirmation of LBAM intercepted on cut flowers and foliage at a USA port of entry, the shipment will be held and treated, re-exported or destroyed by the USDA.

Immediately on receipt of a LBAM interception notification by the USDA the following actions will occur:

- MAFBNZ shall identify the supplying exporter and suspend this exporter's participation in the compliance programme and,
- Initiate a Traceback investigation of the exporter's supply pathway conducted by the IVA.
- The IVA shall identify the offending packer in the exporter's packer/grower supply pathway,
- MAFBNZ will then suspend the offending packer from the compliance programme and request USDA acceptance of the suspended exporter back into the compliance programme on the basis MAFBNZ have identified and still suspended the offending packer & their grower suppliers,
- The IVA shall undertake a Traceback investigation of the packer's grower suppliers and identify the offending grower supplier,
- **MAFBNZ will suspend that grower supplier for the remainder of the export season,**
- MAFBNZ will request USDA acceptance of the suspended packer back into the compliance programme on the basis we had identified and still had the suspended grower isolated from the compliance programme,

- In the process of this Traceback investigation the phytosanitary inspection location that had processed the offending grower's shipment to will be subjected to a systems audit to confirm this inspection location is operating effectively.

20 Key contacts

MAF Biosecurity New Zealand

Lisa Parker
MAF Biosecurity New Zealand,
Plant Exports
PO Box 2526
Wellington
Ph: 04 894 0875
Mob: 029 8940875
Fax: 04 894 0733
Email: lisa.parker@maf.govt.nz

AsureQuality Limited

Matt Gallagher
AsureQuality
PO Box 4127
Mt Maunganui South
Tauranga
Mob: 021 838280
Ph: 07 572 0834
Fax: 07 572 0839
Email : Matt.Gallagher@asurequality.com

Appendix 1. References

- Biosecurity New Zealand Export Certification Standards:
 - System Overview and Requirements
 - Organisation Requirements
 - Technical Requirements – Phytosanitary Inspection
 - Pest Survey Requirements
 - Independent Verification Agency Requirements
 - Plants Export Operations Pest Identification Requirements
- MAFBNZ approved procedures and work instructions.
- MAFBNZ register of growers, production sites, packhouses, storage facilities and exporters.

Appendix 2. Definitions

Approved Organisation

An Organisation that has been formally recognised by Biosecurity New Zealand as competent to receive delegated authority to act on its behalf to provide specific phytosanitary activities in accordance with the requirements specified in the relevant Biosecurity New Zealand standard(s).

Biosecurity New Zealand (MAFBNZ)

The body within the Ministry of Agriculture and Forestry that is responsible for Biosecurity functions, providing official assurances to control authorities in importing countries through export certification.

Cut flowers and foliage

A commodity class for fresh parts of plants intended for decorative use and not for planting.

End Point Consignment Inspection

An officially recognised phytosanitary inspection process for plant product at a final point of storage prior to loading for export.

Independent Verification Agency (IVA)

An organisation accredited as meeting ISO/IEC 17020:2000 and its independence criteria type A, and Biosecurity New Zealand supplementary technical requirements, and authorised by Biosecurity New Zealand to carry out services associated with export certification.

Packhouse Identification Code

A unique identification code which is assigned to each registered packhouse by MAFBNZ.

Production site

A grower designated and MAFBNZ registered part of a property with clearly defined and mapped boundaries on which cut flowers/foliage are to be grown for export under this programme. This may be a group of paddocks, a single paddock, greenhouse or a portion of a paddock or greenhouse within a property. This includes non-export crops that are part of the same production site as an export crop.

Property

A single contiguous area of land as identified by property valuation numbers(s).

Note: Land defined as a property must be contiguous (i.e., touching or adjoining). Land on separate property valuation numbers which is not contiguous (e.g., if separated by public roads or rivers) cannot be designated as one property.

Production Site Identification Code

A unique identification code which is assigned to each MAFBNZ compliant registered production site.

NOTE: The production site identification code is made up of the following information:

For Outdoor Grown Crops

Prefix	Grower code	Field Code	Crop Type	Year
A = AsureQuality	3 Digits	1 digit	See App 3	11

Example: A-301-1-PS-11

For Indoor Grown Crops

Prefix	Grower	Year
A = AsureQuality	3 Digits	11

Example: AO6811

Appendix 3. Crop type reference list for production site identification code

Crop	Crop code
Alstroemeria – cut flowers	AL
Berzelia	BA
Calla Lilies – cut flowers	CL
Cut foliage	CF
Cymbidium – cut flowers	CY
Delphiniums – cut flowers	DS
Erica	ER
Erygnium – cut flowers	EM
Gentiana – cut flowers	GA
Hydrangea	HY
Lilac – cut flowers	LC
Lilium – cut flowers	LM
Nerines – cut flowers	NS
Orchids - other – cut flowers	OS
Other cut flowers	OF
Paeonies – cut flowers	PS
Phormium	PH
Pieris	PR
Pittosporum	PM
Proteaceae – cut flowers	PE
Roses – cut flowers	RS
Tulip	TP
Viburnum	VM
Sandersonia – cut flowers	SA
Spring bulb – cut flowers	SB

Appendix 4. Application for grower and production site registration.

**Cut Flowers and Foliage to the USA 2010-2011
Application for grower and production site registration**

Complete the application form, attach maps and forward to your nominated IVA. Retain a copy for your records and reference.

Note: If you are a grower and pack your own product, complete this registration form only.

1. Grower details

Legal Name:	
Key Contact:	
Postal Address (incl. Post code):	
Physical Address;	
Telephone:	
Mobile:	
Facsimile:	
Email:	
Name of IVA used for phytosanitary services:	

2. Production site details

Tick one:

Indoor Grown Crop Outdoor Grown Crop

Property name and address (include rapid number where relevant): City/Town: Province:	
Property valuation number(s):	
Production site details (as indicated on	

maps):		
List each crop grown for export to the USA and the intended harvest date for each one: (e.g., Cymbidium, Zantedeschia, Peony, Hydrangea)	Crop	Harvest date

3. Pest risk management plan

Name of person responsible for pest risk management plan:	
Contact details: Telephone Mobile Fax Email	
Indicate pest risk management plan in use:	In-field control programme <input type="checkbox"/> or Post-harvest treatment <input type="checkbox"/>

4. Packhouse / exporter / freight forwarder supplied

Provide details of the facility that you will be directly supplying under this programme.

Name Packhouse / Exporter / Freight forwarder (circle one)	Address	MAF ID No. (if known)

If details change during the season you must notify your approved organisation or IVA.

5. Grower compliance agreement

In applying to register for this programme I agree to be bound by the following terms:

1. I agree to comply with the requirements specified within the MAFBNZ Export Compliance Programme for Cut Flowers and Foliage to the USA (the programme), including implementing my documented pest risk management plan.
2. I agree to the IVA, on behalf of MAF, making enquiries and using the information supplied by me, in connection with the programme, and to audit my compliance with the programme.
3. I consent to publication of my status within the programme in any publication, which may be made available to enable export certification.

4. I agree to afford the IVA, or their representatives, co-operation and access necessary to carry out audits in relation to the programme.
5. I understand that if I fail to provide all or any of the information requested in connection with the programme I may be removed from the programme forthwith.
6. I understand that under the Information Privacy Principles of the Privacy Act 1993, I have rights of access to, and correction of, personal information held in connection with participation within this programme.
7. I understand that this registration does not entitle me to automatically undertake export inspection activities on behalf of MAF Biosecurity New Zealand without first becoming an organisation formally approved by Biosecurity New Zealand.
8. I agree to notify the IVA of any changes to the above details.
9. I acknowledge that the IVA's normal Terms of Trade apply.

EXCLUSION OF LIABILITY

10. I accept that under no circumstances will MAF, crown officers, or agents of or other persons associated with MAF or crown officers, be liable for any loss, claim, action, demand, expense, inquiry, harm, or damage, however caused, arising directly or indirectly from or connected in any way to:
11. The performance, or as the case may be, non-performance of the operator (or any of its contractors, sub-contractors, agents, or employees that are not a party to this Contract) of any of its obligations in respect of this programme; or
12. The provision or non-provision of any inspection and/or audit and/or documentation service for MAF export certification by the operator.

INDEMNITY

13. I will indemnify and keep indemnified MAF from and against any liability, loss, damage, costs and expenses (including legal costs and any expenses of going to arbitration), which MAF may suffer or incur arising directly or indirectly from:
14. The performance, or as the case may be, non-performance of the operator (or any of its contractors, sub-contractors, agents, or employees that are not a party to this Contract) of any of its obligations in respect of this programme;
15. Negligent acts or omissions on the part of the operator (or any of its contractors, sub-contractors, agents, or employees that are not a party to this Contract).

Signature of grower:		
Name:		
On behalf of:	Date:	
<i>IVA use:</i>	<i>IVA use:</i>	
Signature of (state IVA) representative (on behalf of MAF Biosecurity New Zealand)	Date:	

Name:	
Title:	
Seal:	

Appendix 5. Pest Risk Management Plan *Example only*

MAFBNZ Export Compliance Programme – Light Brown Apple Moth (*Epiphyas postvittana*) pest risk management plan for herbaceous peony cut flower exports to the USA.

1. Grower details

Legal Name:	Registered Cut flower Grower
Physical Address:	As per Location Map
Telephone:	
Mobile:	
Facsimile:	
Email:	

2. Pest Risk Management Plan Manager

Name of person responsible for pest risk management plan:	John Smith
Contact details: Telephone Mobile Fax Email	Grower@cutflowers.co.nz

3. Details of Pest Risk Management Plan

Complete the details of a pest risk management plan for each crop or group of crops to which the programme is applied.

Crop species to which this pest risk management plan applies:	Herbaceous Peony
Production site identification numbers:	To be issued on positive chemical residue analysis
Components of the pest risk management plan (tick relevant elements):	<input type="checkbox"/> (i) Field control programme
<p>(i) Field control programme A field control programme is based on the appropriate application of agrichemicals with registered or known efficacy against light brown apple moth or leaf rollers (Tortricidae) in general. The programme describes timing of</p>	

application, products, rates, and spray diary records.	
Description of spray plan:	
Timing (date or stage of growth):	First application 14 days prior to first harvest
Product(s) – trade name and active:	Success Naturalyte. Active ingredient – Spinosad Mavrik Aquaflo. Active ingredient - Taufluvinate
Surfactant (Improves spray retention on hard-to-wet surfaces including hard-to-wet insect forms):	Latron B-1959. Contains modified phthallic glycerol alkyd resin and butyl alcohol.
Rate of application:	40 mls/100l Success Naturalyte with 20 mls/100l Latron B 1956 Plus 40 mls/100l Mavrik Aquaflo
Timing (date or stage of growth):	Second application at 7 days prior to harvest
Product(s) – trade name and active:	Success Naturalyte. Active ingredient – Spinosad Mavrik Aquaflo. Active ingredient - Taufluvinate
Surfactant (Improves spray retention on hard-to-wet surfaces including hard-to-wet insect forms):	Latron B-1959. Contains modified phthallic glycerol alkyd resin and butyl alcohol.
Rate of application:	40 mls/100l Success Naturalyte with 20 mls/100l Latron B 1956 Plus 40 mls/100l Mavrik Aquaflo
Records:	
Details of Agrichemical applications are contained in a spray diary:	
<ul style="list-style-type: none"> • Date applied; • Product, active ingredient, and rate of application; • Species or area of the production site that the agrichemicals have been applied to (if not the entire production site); • Name and signature of applicator. 	
(iv) Post harvest treatment	
Not applicable to this crop.	
Description of post harvest treatment:	
(Product, rate, concentration, temperature, time. Include variations allowed for different crops.)	

Place of application:

- Grower property (specify). See attached list.
- Packhouse (specify). See attached list.

Grower signature:

Date:

Appendix 6. Application for packhouse / storage facility registration.

**Cut Flowers and Foliage to the USA 2010-2011
Application for packhouse and storage facility registration**

Complete the application form, attach maps and pest risk management plan and forward to your nominated IVA. Retain a copy for your records and reference.

1. Packhouse / storage facility details

Legal Name:	
Key Contact:	
Postal Address (incl. Post code):	
Physical Address;	
Telephone:	
Mobile:	
Facsimile:	
Email:	
Name of IVA used for phytosanitary services:	

2. Supplying growers and production sites

Name of grower	Property location

3. Pest risk management plan

Indicate any post harvest treatments to be applied at the packhouse.

--

4. Phytosanitary inspection

<p>Will phytosanitary inspection be undertaken at this packhouse?</p> <p><input type="checkbox"/> Yes. If yes, what is the name of the MAFBNZ approved organization or IVA that will undertake phytosanitary inspection.</p> <p><input type="checkbox"/> No. If no, where will the inspection take place (name of freight forwarder or exporter)?</p>

5. Exporters / freight forwarder supplied

Provide details of the exporters or freight forwarder that you will be directly supplying under this programme.

Name	Address	MAF ID No. (if known)

If details change during the season you must notify your approved organisation or IVA.

6. Packhouse compliance agreement

In applying to register for this programme I agree to be bound by the following terms:

1. I agree to comply with the requirements specified within the MAFBNZ Export Compliance Programme for Cut Flowers and Foliage to the USA (the programme), including implementing my documented Pest risk management plan.
2. I agree to the IVA, on behalf of MAF, making enquiries and using the information supplied by me, in connection with the programme, and to audit my compliance with the programme.
3. I consent to publication of my status within the programme in any publication, which may be made available to enable export certification.
4. I agree to afford the IVA, or their representatives, co-operation and access necessary to carry out audits in relation to the programme.
5. I understand that if I fail to provide all or any of the information requested in connection with the programme I may be removed from the programme forthwith.
6. I understand that under the Information Privacy Principles of the Privacy Act 1993, I have rights of access to, and correction of, personal information held in connection with participation within this programme.
7. I understand that this registration does not entitle me to automatically undertake export inspection activities on behalf of MAF Biosecurity New Zealand without first becoming an organisation formally approved by Biosecurity New Zealand.
8. I agree to notify the IVA of any changes to the above details.

9. I acknowledge that the IVA's normal Terms of Trade apply.

EXCLUSION OF LIABILITY

- 10. I accept that under no circumstances will MAF, crown officers, or agents of or other persons associated with MAF or crown officers, be liable for any loss, claim, action, demand, expense, inquiry, harm, or damage, however caused, arising directly or indirectly from or connected in any way to:
- 11. The performance, or as the case may be, non-performance of the operator (or any of its contractors, sub-contractors, agents, or employees that are not a party to this Contract) of any of its obligations in respect of this programme; or
- 12. The provision or non-provision of any inspection and/or audit and/or documentation service for MAF export certification by the operator.

INDEMNITY

- 13. I will indemnify and keep indemnified MAF from and against any liability, loss, damage, costs and expenses (including legal costs and any expenses of going to arbitration), which MAF may suffer or incur arising directly or indirectly from:
- 14. The performance, or as the case may be, non-performance of the operator (or any of its contractors, sub-contractors, agents, or employees that are not a party to this Contract) of any of its obligations in respect of this programme;
- 15. Negligent acts or omissions on the part of the operator (or any of its contractors, sub-contractors, agents, or employees that are not a party to this Contract).

Signature of packhouse:		
Name:		
On behalf of:	Date:	
<i>IVA use:</i>	<i>IVA use:</i>	
Signature of (state IVA) representative (on behalf of MAF Biosecurity New Zealand)	Date:	
Name:		
Title:		

Seal:	
-------	--

Appendix 7. Application for freight forwarder registration.

**Cut Flowers and Foliage to the USA 2010-2011
Application for freight forwarder registration**

Complete the application form and forward to your IVA. Retain a copy for your records and reference.

1. Freight forwarder details

Legal Name:	
MAFBNZ contract of approval number (if an approved organisation)	
Key Contact:	
Postal Address (incl. Post code):	
Physical Address;	
Telephone:	
Mobile:	
Facsimile:	
Email:	
Name of IVA used for phytosanitary services:	

2. Supplying packhouses and/or direct supplying growers

If receiving and consolidating consignments direct from a packhouse or grower provide details here.

Name	Contact email address or physical location

--	--

3. Exporters

List exporters whose cut flowers and foliage you are forwarding under this programme.

Exporter name	Exporter address	Exporter MAF ID No. (if known)

4. Pest risk management plan

<p>Indicate any post harvest treatments to be applied at your premises, and name of approved operator.</p>
--

5. Phytosanitary inspection

<p>Will phytosanitary inspection be undertaken at your premises?</p> <p><input type="checkbox"/> Yes If yes, what is the name of the MAFBNZ approved organization or IVA that will undertake phytosanitary inspection.</p> <p><input type="checkbox"/> No If no, where will or has the inspection taken place (name of packhouse or freight forwarder or exporter)?</p>
--

6. Freight forwarder compliance agreement

In applying to register for this programme I agree to be bound by the following terms:

1. I agree to comply with the requirements specified within the MAFBNZ Export Compliance Programme for Cut Flowers and Foliage to the USA (the programme).
2. I agree to the IVA, on behalf of MAF, making enquiries and using the information supplied by me, in connection with the programme, and to audit my compliance with the programme.
3. I consent to publication of my status within the programme in any publication, which may be made available to enable export certification.

4. I agree to afford the IVA, or their representatives, co-operation and access necessary to carry out audits in relation to the programme.
5. I understand that if I fail to provide all or any of the information requested in connection with the programme I may be removed from the programme forthwith.
6. I understand that under the Information Privacy Principles of the Privacy Act 1993, I have rights of access to, and correction of, personal information held in connection with participation within this programme.
7. I understand that this registration does not entitle me to automatically undertake export inspection activities on behalf of MAF Biosecurity New Zealand without first becoming an organisation formally approved by Biosecurity New Zealand.
8. I agree to notify the IVA of any changes to the above details.
9. I acknowledge that the IVA's normal Terms of Trade apply.

EXCLUSION OF LIABILITY

10. I accept that under no circumstances will MAF, crown officers, or agents of or other persons associated with MAF or crown officers, be liable for any loss, claim, action, demand, expense, inquiry, harm, or damage, however caused, arising directly or indirectly from or connected in any way to:
11. The performance, or as the case may be, non-performance of the operator (or any of its contractors, sub-contractors, agents, or employees that are not a party to this Contract) of any of its obligations in respect of this programme; or
12. The provision or non-provision of any inspection and/or audit and/or documentation service for MAF export certification by the operator.

INDEMNITY

13. I will indemnify and keep indemnified MAF from and against any liability, loss, damage, costs and expenses (including legal costs and any expenses of going to arbitration), which MAF may suffer or incur arising directly or indirectly from:
14. The performance, or as the case may be, non-performance of the operator (or any of its contractors, sub-contractors, agents, or employees that are not a party to this Contract) of any of its obligations in respect of this programme;
15. Negligent acts or omissions on the part of the operator (or any of its contractors, sub-contractors, agents, or employees that are not a party to this Contract).

Signature of freight forwarder representative:		
Name:		
On behalf of:		Date:

<i>IVA use:</i> Signature of (state IVA) representative (on behalf of MAF Biosecurity New Zealand)	<i>IVA use:</i> Date:
Name:	
Title:	
Seal:	

Appendix 8. Application for exporter registration.

Cut Flowers and Foliage to the USA 2010-2011 Application for exporter registration

Complete the application form and forward to your IVA. Retain a copy for your records and reference.

1. Exporter details

Legal Name:	
MAFBNZ contract of approval number (if an approved organisation)	
Key Contact:	
Postal Address (incl. Post code):	
Physical Address;	
Telephone:	
Mobile:	
Facsimile:	
Email:	
Name of IVA used for phytosanitary services:	

2. Supplying packhouses and/or direct supplying growers

If receiving and consolidating consignments direct from a packhouse or grower provide details here.

Name	Contact email address or physical location

--	--

3. Freight forwarder

Identify your freight forwarder.

Freight forwarder name	Address	MAF ID No. (if known)

4. Pest risk management plan

Indicate any post harvest treatments to be applied at your premises.

5. Phytosanitary inspection

Will phytosanitary inspection be undertaken at your premises?

Yes. If yes, what is the name of the MAFBNZ approved organization or IVA that will undertake phytosanitary inspection.

No. If no, where will or has the inspection taken place (name of packhouse or freight forwarder or exporter)?

6. Exporter compliance agreement

In applying to register for this programme I agree to be bound by the following terms:

1. I agree to comply with the requirements specified within the MAFBNZ Export Compliance Programme for Cut Flowers and Foliage to the USA (the programme).
2. I agree to the IVA, on behalf of MAF, making enquiries and using the information supplied by me, in connection with the programme, and to audit my compliance with the programme.
3. I consent to publication of my status within the programme in any publication, which may be made available to enable export certification.
4. I agree to afford the IVA, or their representatives, co-operation and access necessary to carry out audits in relation to the programme.
5. I understand that if I fail to provide all or any of the information requested in connection with the programme I may be removed from the programme forthwith.

6. I understand that under the Information Privacy Principles of the Privacy Act 1993, I have rights of access to, and correction of, personal information held in connection with participation within this programme.
7. I understand that this registration does not entitle me to automatically undertake export inspection activities on behalf of MAF Biosecurity New Zealand without first becoming an organisation formally approved by Biosecurity New Zealand.
8. I agree to notify the IVA of any changes to the above details.
9. I acknowledge that the IVA's normal Terms of Trade apply.

EXCLUSION OF LIABILITY

10. I accept that under no circumstances will MAF, crown officers, or agents of or other persons associated with MAF or crown officers, be liable for any loss, claim, action, demand, expense, inquiry, harm, or damage, however caused, arising directly or indirectly from or connected in any way to:
11. The performance, or as the case may be, non-performance of the operator (or any of its contractors, sub-contractors, agents, or employees that are not a party to this Contract) of any of its obligations in respect of this programme; or
12. The provision or non-provision of any inspection and/or audit and/or documentation service for MAF export certification by the operator.

INDEMNITY

13. I will indemnify and keep indemnified MAF from and against any liability, loss, damage, costs and expenses (including legal costs and any expenses of going to arbitration), which MAF may suffer or incur arising directly or indirectly from:
14. The performance, or as the case may be, non-performance of the operator (or any of its contractors, sub-contractors, agents, or employees that are not a party to this Contract) of any of its obligations in respect of this programme;
15. Negligent acts or omissions on the part of the operator (or any of its contractors, sub-contractors, agents, or employees that are not a party to this Contract).

Signature of exporter representative:		
Name:		
On behalf of:	Date:	
<i>IVA use:</i>	<i>IVA use:</i>	
Signature of (state IVA) representative (on behalf of MAF Biosecurity New Zealand)	Date:	

Name:	
Title:	
Seal:	

Appendix 9. Application for IVA registration.

Cut Flowers and Foliage to the USA 2010-2011 Application for IVA registration

IVA details and scope

Complete IVA details and forward to MAFBNZ.

Legal Name:	
Programme Contact:	
Contact person for updating MAF register:	Name: Email address:
Postal Address (incl. post code):	
Physical Address;	
Telephone:	
Mobile:	
Facsimile:	
Email:	
Scope of services to be provided under this programme (e.g., phytosanitary inspection, treatment supervision, sampling for residue testing, PIPS, verification etc.):	
Signature of IVA representative:	
Date:	