



# ULD Survey within the air freight pathway

Biosecurity Environment Group

*Growing and Protecting New Zealand*



[www.mpi.govt.nz](http://www.mpi.govt.nz)

# What's in this Presentation

- Introducing – ULD Reporting
- What to do
- What should be reported
- Why it should be reported
- Who to contact for clarification

# Introduction

- New Zealand economy is dependent on our export of agriculture, horticulture and forestry products.
- Air containers/ULDs arrive into New Zealand and can carry pests and diseases harmful to humans and our livelihood.
- MPI investigate this pathway to make sure we know what the risk is and what can be done to reduce the risk.

# ULD Survey

- See risk
- **Report** on a log sheet
- **Send** the log sheet to address at bottom when complete

# See, Report and Send

See (Note type of contamination )

## Report

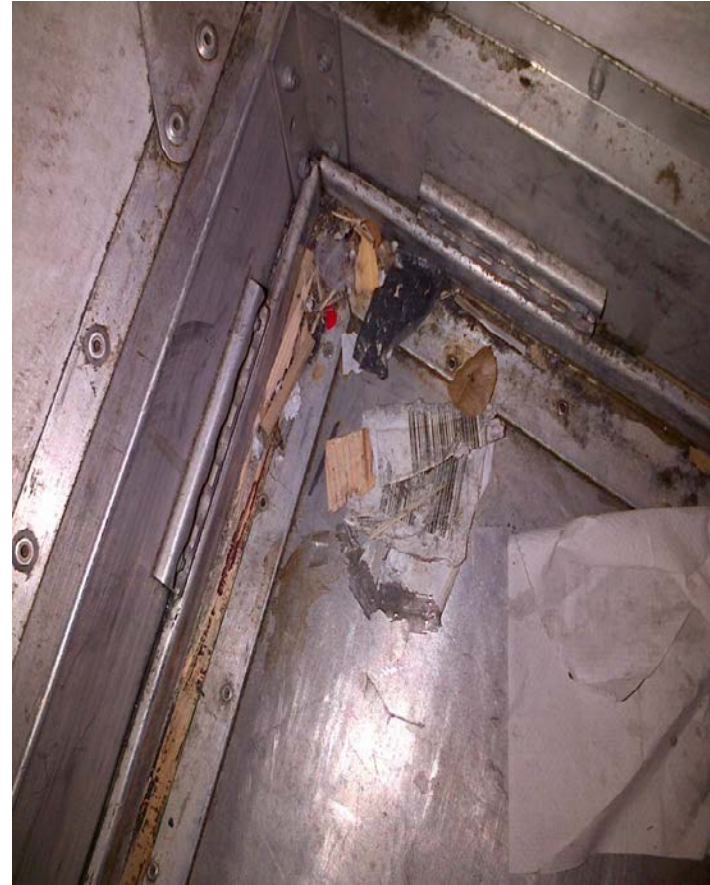
- Flight (*if known*)/Origin of freight/No. ULD's from flight /ULD No.
- Contaminant (leaves, seeds, animal product, fresh produce, bark, soil in clumps, insects etc.)
- Wood packaging ISPM marked
- Location found /Person making find

# What is Biosecurity Risk

Risk material in this photo:

- Seed,
- Leaves (3 or more)
- Bark
- Animal products (feather)

(Photo 15/04/2013)



# Biosecurity risk –fresh items that insects eat

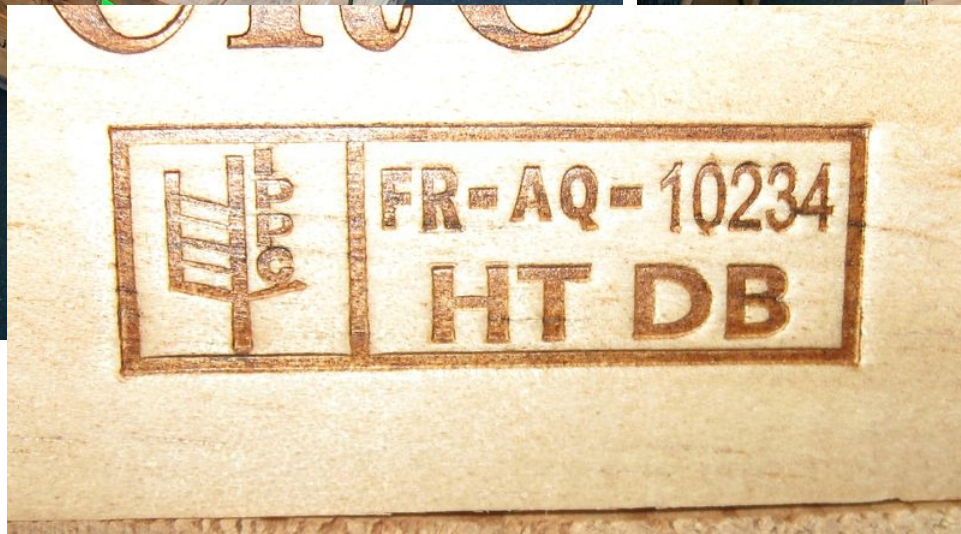




# What is Biosecurity Risk

Wood packaging:

- Must be ISPM marked





# Biosecurity risk –unmarked wooden packaging

- MDF, dressed timber is not a risk

Red arrowed  
wood are a  
risk



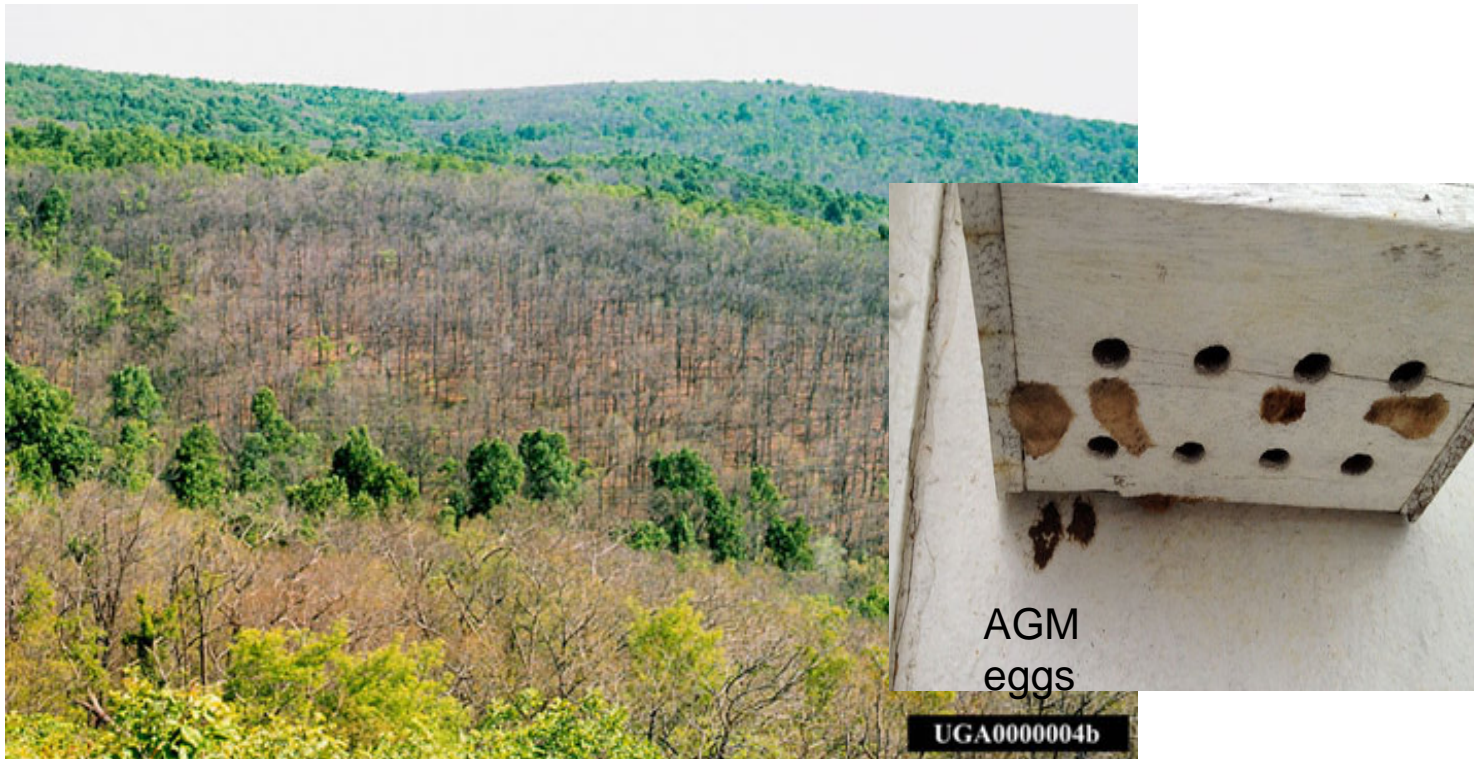
# Biosecurity risk-packaging materials

Packaging materials that are a biosecurity risk include:

- Straw/wood shavings/ jute/wool
- Wood/Tyres used as dunnage (wood as spacers in air freight)

# Biosecurity Risk to our native flora and fauna

## The effect of Asian Gypsy Moth





# Biosecurity Risk to economy



Figure 3: Top view of adult MPB  
(actual size, 1/8 to 1/3 inch).

## Mountain Pine Beatle

# Biosecurity Risk to home

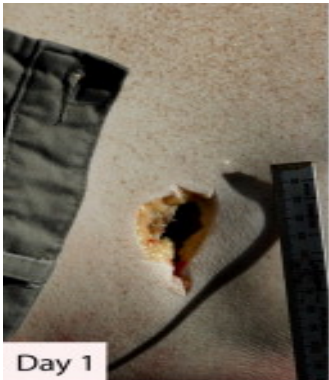


Effect of termite damage





# Biosecurity Risk to Health



Day 1



Day 1



Day 2



Day 3



Day 5



Day 6-7



Day 8-9



Day 9

Red Imported  
Fire Ant-detected  
at Auckland  
Airport



# Clarification

- Contact Rachel Barker 09 909 3006 or Dave Goulter 09 909 8609 for clarification of survey recording
- Live pests contact 0800 80 99 66

# New Zealand –its our place to protect

