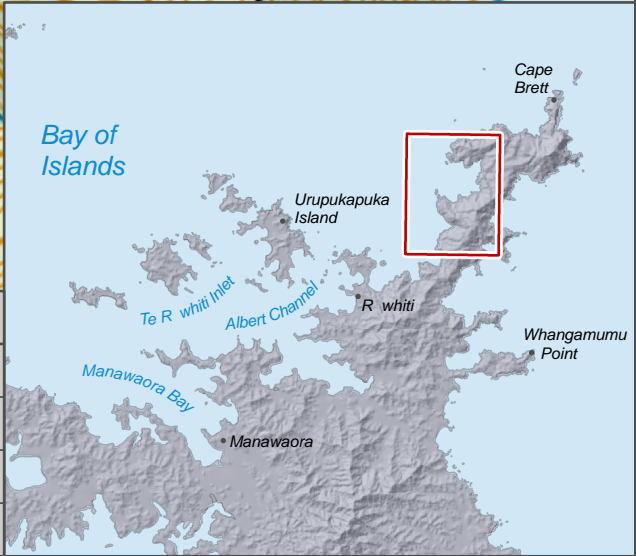




Point	Latitude	Longitude
A	35°11.350 S	174°17.550 E
B	35°11.350 S	174°17.505 E
C	35°12.010 S	174°17.280 E
D	35°12.265 S	174°17.310 E



## Maunganui Bay Temporary Fishing Closure (except Kina)

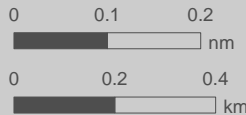
Date: 21/10/2022  
Produced by: Spatial Intelligence  
Reference: r220167  
Coordinate System: WGS 1984 Mercator 41



Maunganui Bay temporary closure



Maunganui Bay temporary closure coordinates



Map Scale: 1:15,000

Data Attribution:  
This map uses data sourced  
from LINZ under CC-BY.