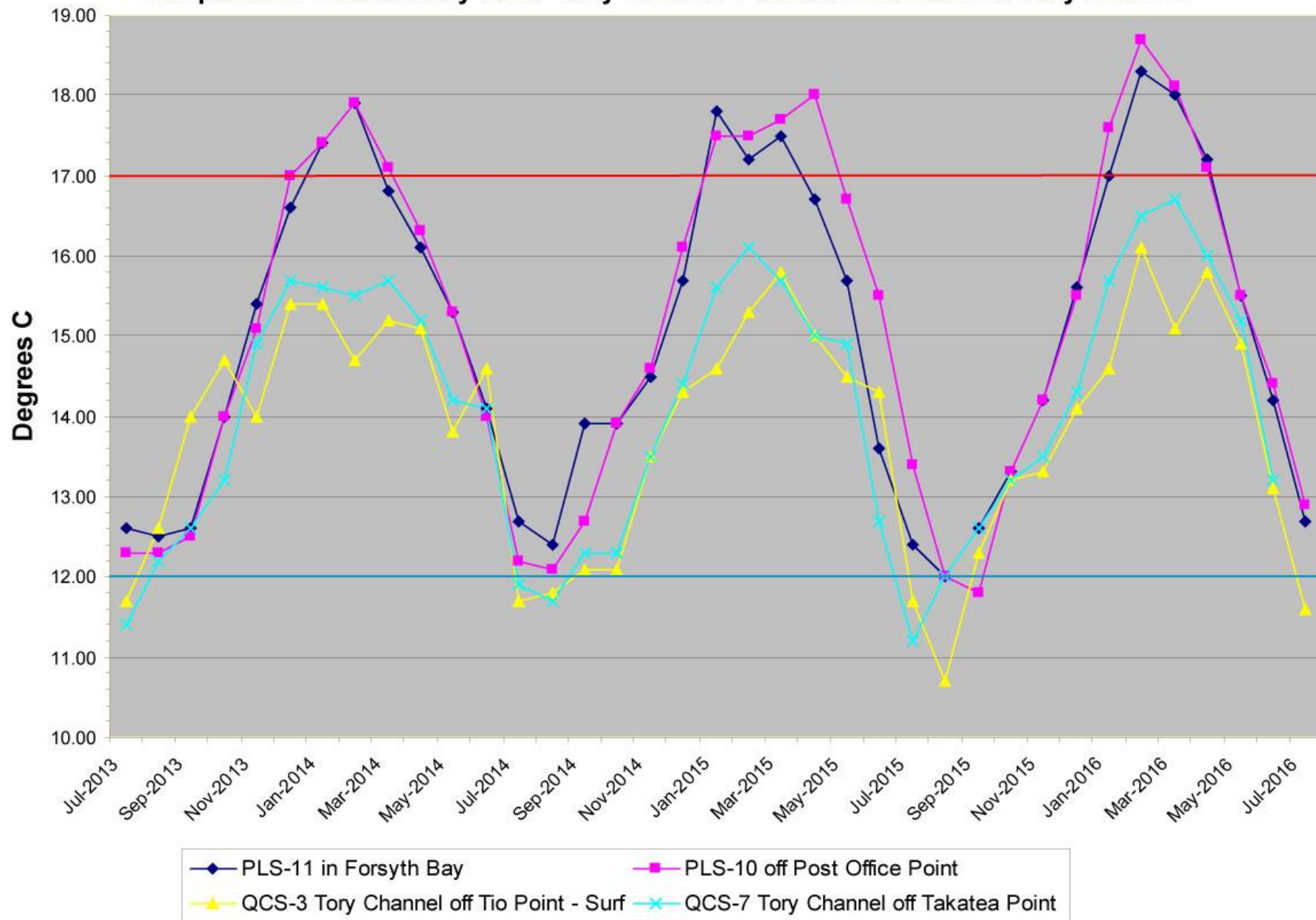


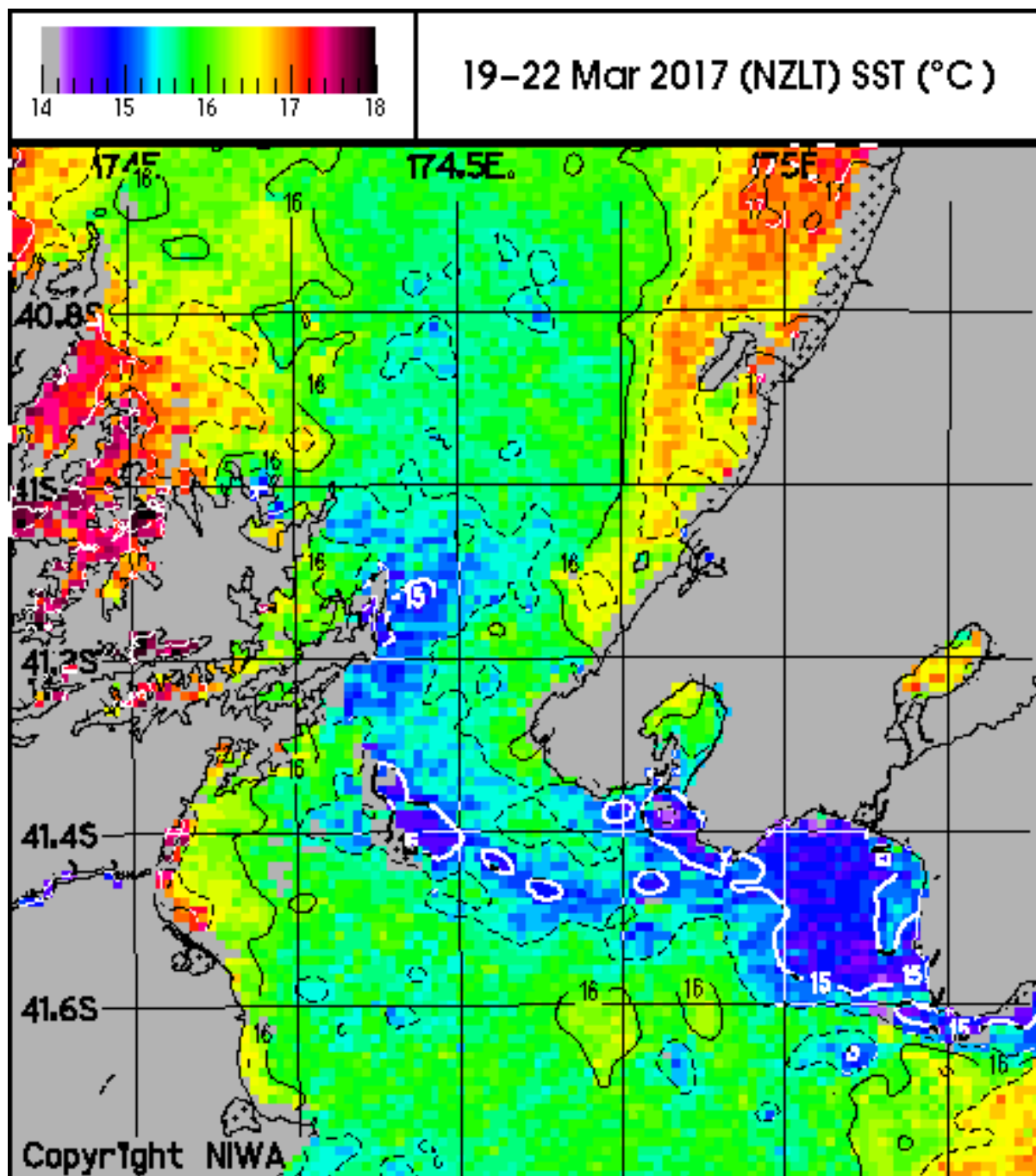
Temperature records July 2013 - July 2016 for Pelorus Entrance and Tory Channel

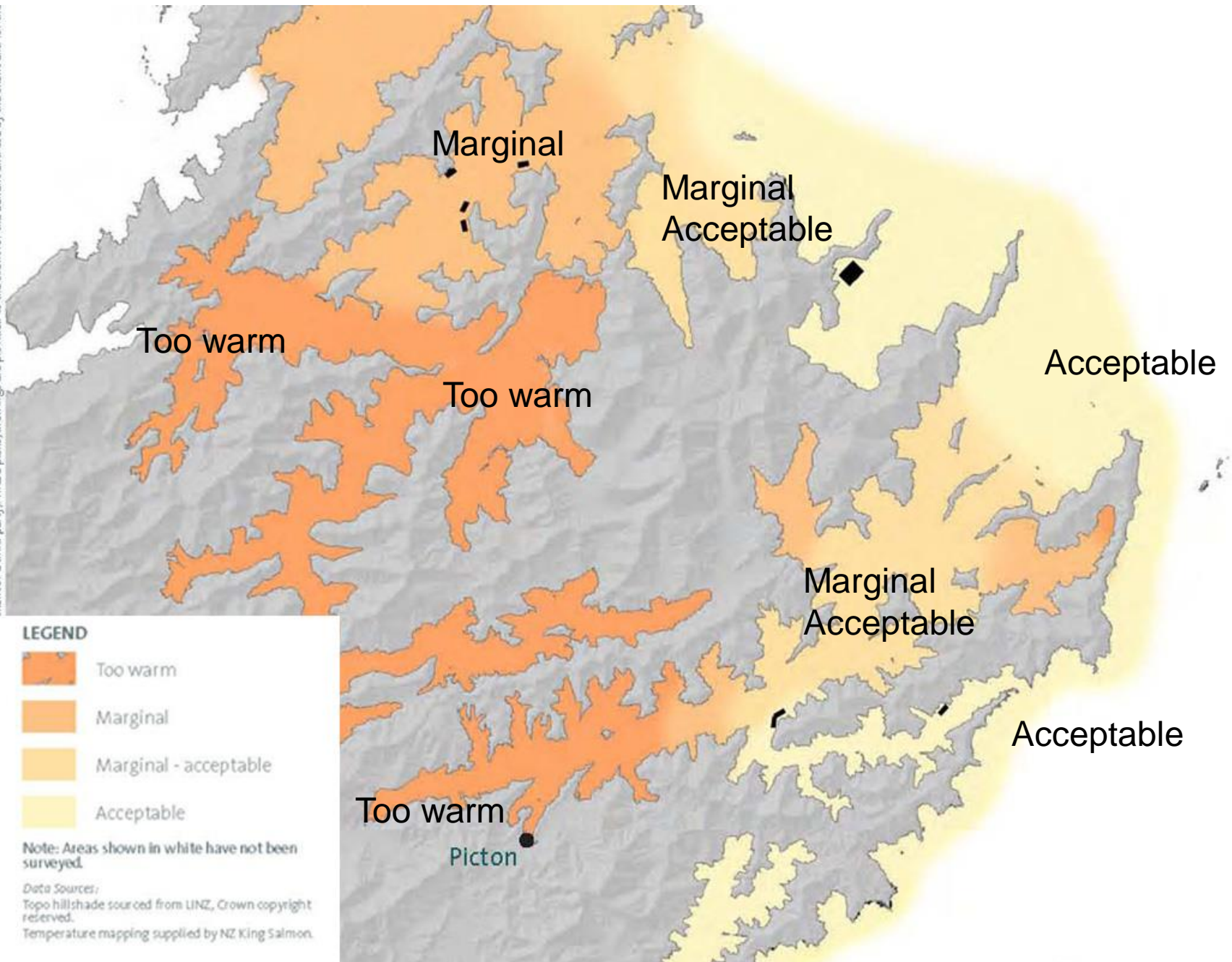


NIWA
sea surface
temperatures

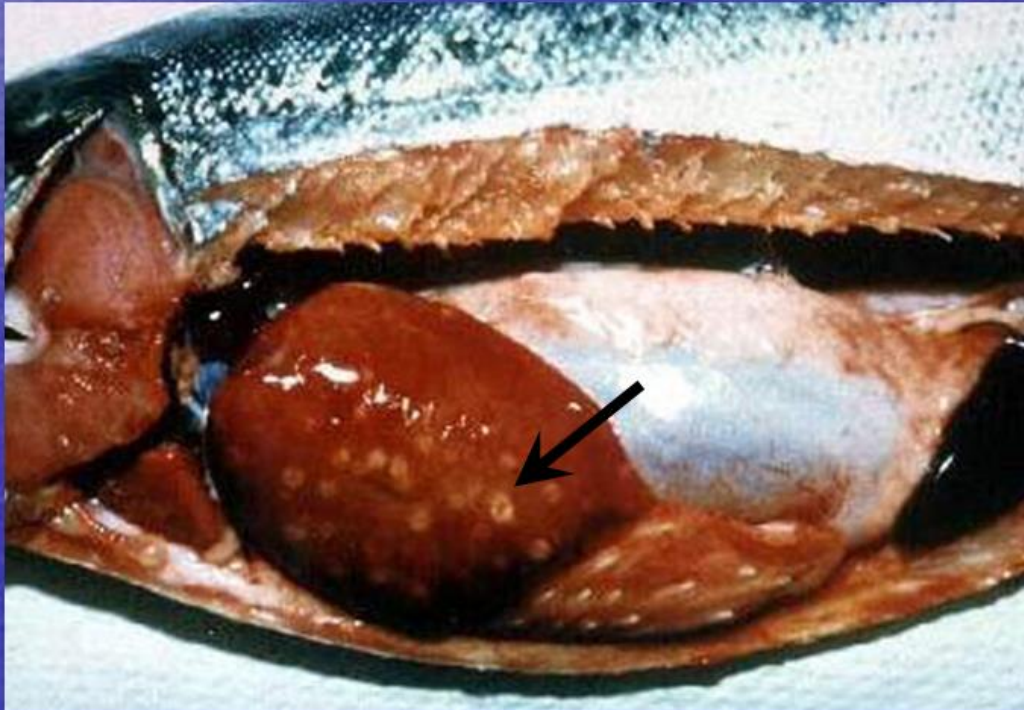
Summer 2017

Blue = 15 °C
Green = 16 °C
Yellow = 16.6 °C
Red > 17 °C





"Rickettsia-like organisms" in aquatic animals - fish



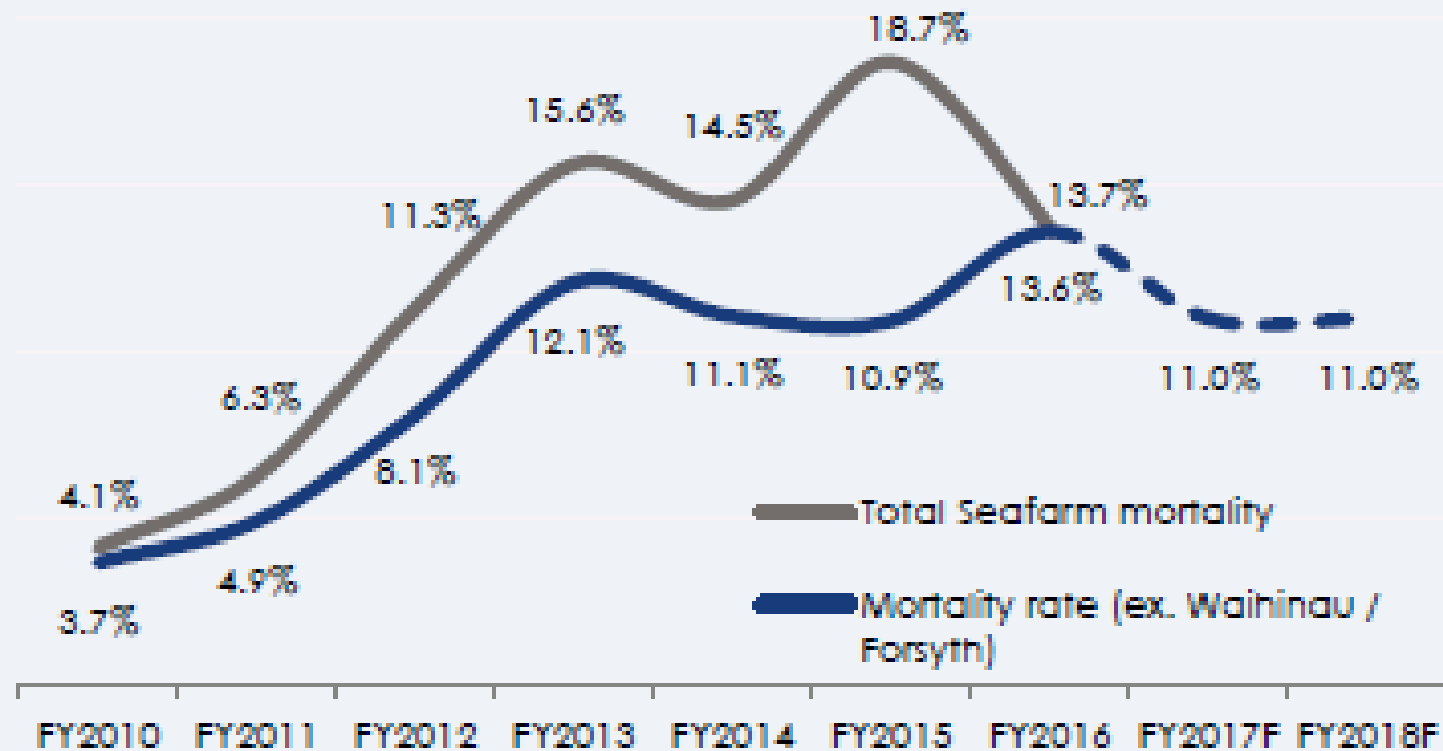
Piscirickettsias
(O. Rickettsiales)
causing systemic
infections in fish

e.g. *Piscirickettsia
salmonis* – causes
disease in cultured
salmonids.

Photo credit: John Fryer, Oregon State University.

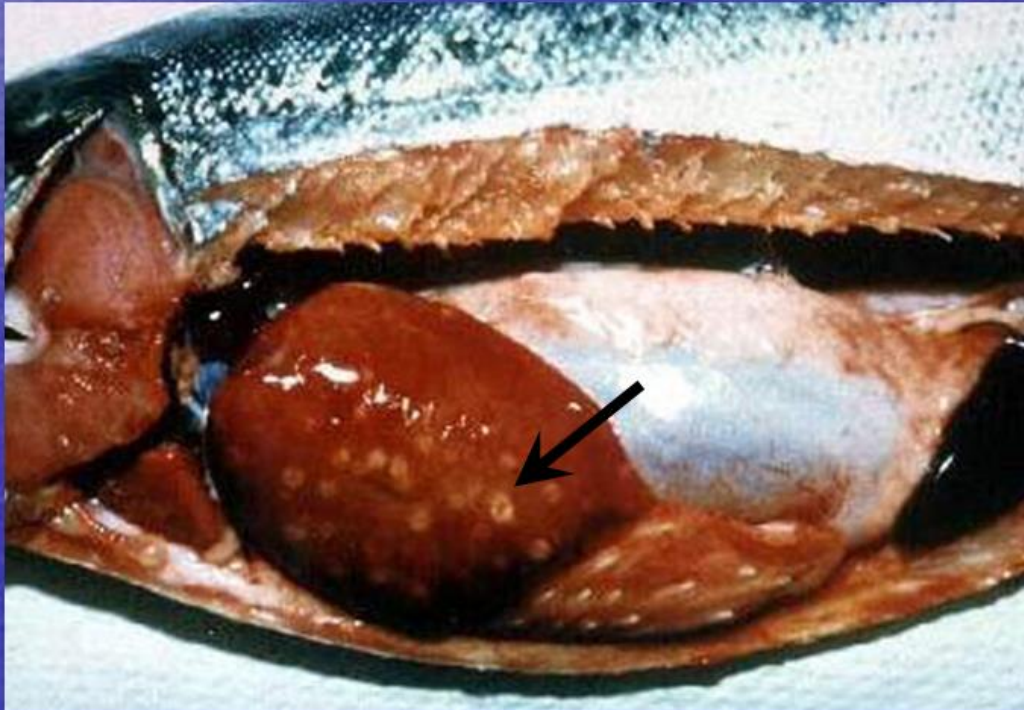
DIGSEFISH
SERVICES

MORTALITY



Source: Product disclosure statement and Prospective Financial Information
NZKS Investments Ltd., 23 September 2016.

"Rickettsia-like organisms" in aquatic animals - fish



Piscirickettsias
(O. Rickettsiales)
causing systemic
infections in fish

e.g. *Piscirickettsia
salmonis* – causes
disease in cultured
salmonids.

Photo credit: John Fryer, Oregon State University.

DIGSEFISH
SERVICES

Summer 2011

Green is
Phytoplankton
Bloom



Sea lice



SEA LICE

Likelihood of release into salmon farms: **LOW**

Likelihood of exposure and establishment: **MODERATE**

Table 5. Matrix of rules for combining descriptive likelihoods for the release and exposure assessments.

sealice

Likelihood of exposure

Likelihood of release		High	Moderate	Low	Very Low	Extremely low	Negligible
	High	High	Moderate	Low	Very Low	Extremely low	Negligible
	Moderate		Low	Low	Very Low	Extremely low	Negligible
	Low		???	Very Low	Very Low	Extremely low	Negligible
	Very Low				Extremely low	Extremely low	Negligible
	Extremely low					Negligible	Negligible
	Negligible						Negligible

The risk assessment for a particular hazard was concluded if the exposure assessment determined that the probability of establishment was negligible.