



Golden Bay Ring Road Consortium and Tasman Bay Ring Road Consortium Spat Catching Applications – Seeking Information

The Ministry for Primary Industries (MPI) is seeking information on how the Golden Bay Ring Road Consortium and Tasman Bay Ring Road Consortium (RRC) spat catching applications may affect recreational, customary or commercial fishing.

Background

MPI (then the Ministry of Fisheries) made preliminary decisions on the RRC spat catching applications in Golden and Tasman bays in 2009. In both cases MPI was not satisfied the proposed spat catching activities would not have an undue adverse effect on commercial scallop fishing in the SCA7 scallop fishery. MPI did not consider the effects on other types of commercial fishing, recreational fishing or customary fishing to be undue.

Final decisions on the RRC spat catching applications were not progressed immediately. The aquaculture law required MPI to complete decisions on the Tasman Interim Aquaculture Management Areas (Tasman IAMAs) before the completing the RRC applications. With the decisions on the Tasman IAMAs now made, MPI is able to continue processing the RRC applications.

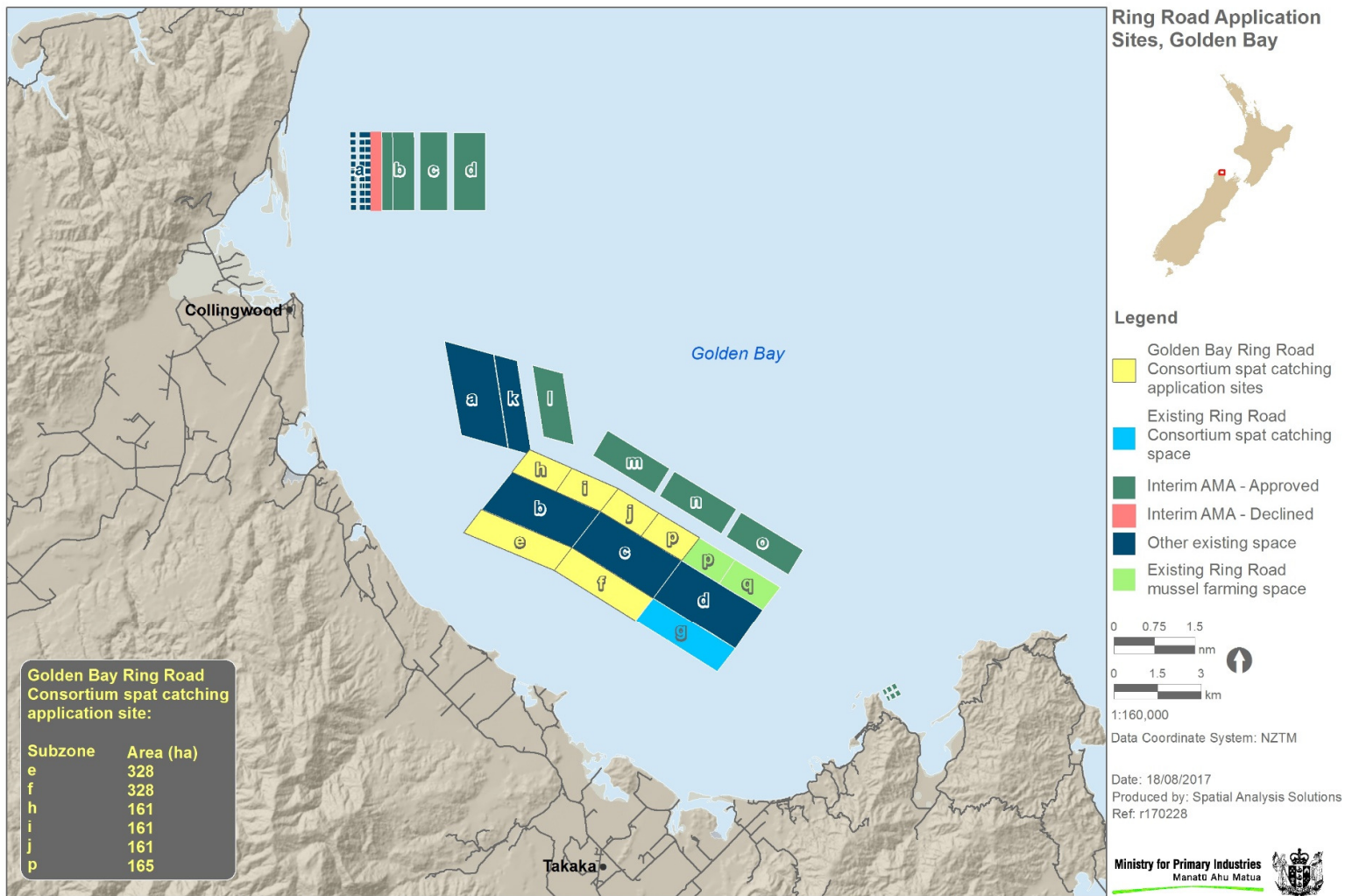
Because considerable time has passed since the preliminary decisions on the RRC applications, MPI is remaking its preliminary decisions. As part of this process MPI is seeking information on how the proposed spat catching activities in Golden and Tasman bays would affect your recreational, customary or commercial fishing.

Application details – Golden Bay spat catching sites

The resource consent (NN990366) for the Golden Bay sites in this application (MPI ref: C18-1158) provides for seasonal and rotational spat catching over both the existing RRC site zoned for spat catching (subzone g) and the new sites covered by this application (subzones e, f, h, i, j and part of p) – see Map 1.

The total area covered by application C18-1158 is 1,309 hectares (ha). However, due to the rotational use requirements of resource consent NN990366 only one third of the area covered by the resource consent can be occupied at any one time.¹ This means that if application C18-1158 is approved, there will be an additional 215 ha that can be occupied with seasonal spat catching structures (being 1/3 of subzones h, i, j and part of p).

¹ Resource consent NN990366 does not require rotation. However, even if structures are not rotated across the consented area, only one third can be occupied at any one time.



Disclaimer: This map and all information accompanying it (the "Map") is intended to be used as a guide only, in conjunction with other data sources and methods, and should only be used for the purpose for which it was developed. The information shown in this Map is based on a summary of data obtained from various sources. While all reasonable measures have been taken to ensure the accuracy of the Map, MPI: (a) gives no warranty or representation in relation to the accuracy, completeness, reliability or fitness for purpose of the Map; and (b) accepts no liability whatsoever in relation to any loss, damage or other costs relating to any person's use of the Map, including but not limited to any compilations, derivative works or modifications of the Map. Crown copyright ©. This map is subject to Crown copyright administered by Ministry for Primary Industries (MPI). Data Attribution: This map uses data sourced from LINZ under CC-BY and © Geography.

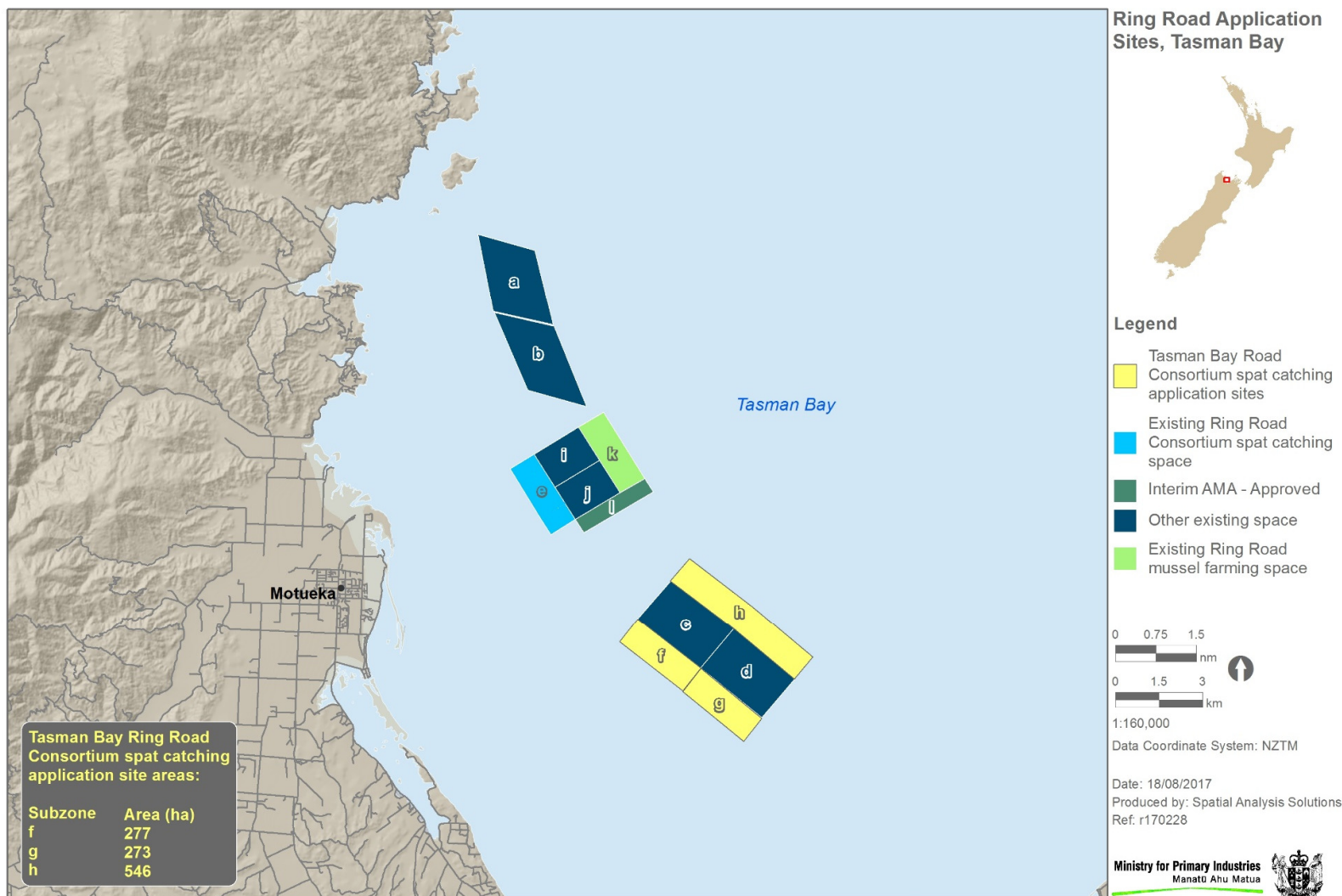
Map 1: Location of RRC spat catching application sites, and other aquaculture sites, in Golden Bay

Application details – Tasman Bay spat catching sites

The resource consent (NN990367) for the Tasman Bay sites in this application (MPI ref: C18-1159) provides for seasonal and rotational spat catching over both the existing RRC site zoned for spat catching (subzone e) and the new sites covered by this application (subzones f, g, and h) – see Map 2.

The total area covered by application C18-1159 is 1,096 ha. However, due to the rotational use requirements of resource consent NN990367 only one third of the area covered by the resource consent can be occupied at any one time.² This means that if application C18-1159 is approved, there will be an additional 186 ha that can be occupied with seasonal spat catching structures (being 1/3 of subzone h).

² Resource consent NN990367 does not require rotation. However, even if structures are not rotated across the consented area, only one third can be occupied at any one time.



Map 2: Location of RRC spat catching application sites, and other aquaculture sites, in Tasman Bay

Providing information

If you would like to provide information on how the proposed spat catching activities in Golden and Tasman bays would affect your recreational, customary or commercial fishing, please provide this to MPI at uae@mpi.govt.nz by **17 September 2017**.

You can find out more information on the matters MPI will consider when assessing these spat catching permit applications (the 'undue adverse effects' test) by going to the MPI website (www.mpi.govt.nz) and searching on Undue Adverse Effects.