

Ministry for Primary Industries
Manatū Ahu Matua



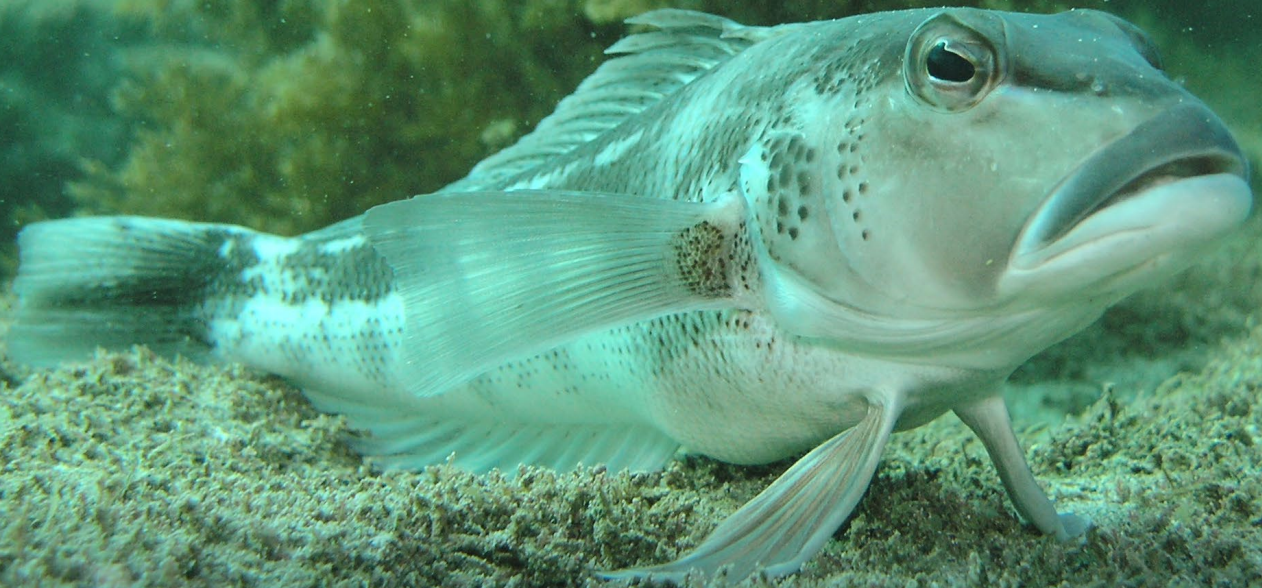
Ministry for Primary Industries
Manatū Ahu Matua



www.mpi.govt.nz/bluecod
0800 00 83 33

Working together for Blue Cod

The National Blue Cod Strategy



Find out about the strategy and how to be
involved: www.mpi.govt.nz/bluecod

What's the plan?

The Ministry for Primary Industries (MPI) wants a **National Blue Cod Strategy** to:

- provide a consistent management framework
- improve fisheries under pressure
- maintain and enhance well-performing fisheries.

Over time, the strategy will review all aspects of the blue cod fishery across the whole of New Zealand. But we'll start with the South Island so we can deal with some priority management concerns.

Experts meet to start the work

On 3 July 2017, MPI held the first expert workshop in Christchurch to begin developing the National Blue Cod Strategy.

Those invited to take part were highly experienced fishers or consultants in commercial, recreational, or customary fishing. MPI is using their expertise to help inform and develop the strategy. They are not sector representatives.

At this first meeting, they looked at defining:

- the overall problem facing the blue cod fishery
- what we want to achieve – our aims
- what we need to do to get there – our objectives.

To find out more about the first expert workshop visit: www.mpi.govt.nz/bluecod

Next steps

MPI will soon be reaching out to fishers, tangata whenua and the general public. This will involve:

- public drop-in sessions
- club meetings
- an online survey.

We want your feedback on what the experts have developed so far, and your thoughts about your local blue cod fishery.

Stay informed

We'll let you know about ways you can be involved as soon as they're confirmed. You can stay up to date by:

- visiting www.mpi.govt.nz/bluecod
- emailing the recfishingteam@mpi.govt.nz to sign up to the recreational fishing newsletter
- or by following one of our recreational fisheries Facebook pages:
 - MPI fisheries – Northland
 - MPI fisheries – Nelson/Marlborough/Kaikōura
 - MPI fisheries – Canterbury/Westland
 - MPI fisheries – Otago/Southland

