

*“Whangaia te iwi”
(Feed the people)*

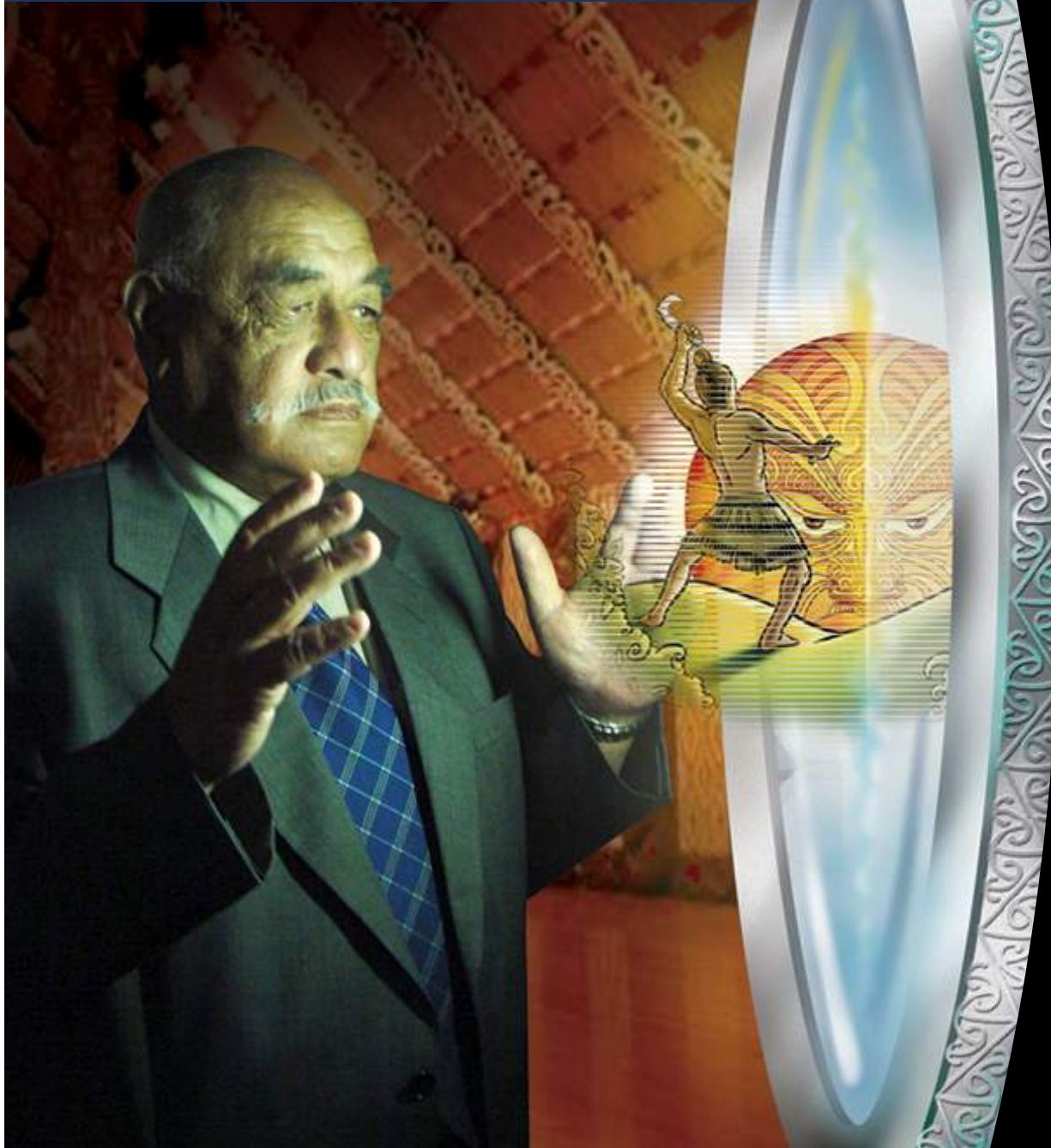


Looking Back...Nati Butter

Ngati Porou Dairy Co-operative

This company's factory is at Ruatoria, and, in regard to ventures predominantly Maori, the basis of financing the undertaking (including buying dairy stock for intending suppliers) was unique. Owners of several valuable leased native blocks borrowed, in all, £14,800 from the Native Trustee and took up preference shares. As suppliers qualified, with deductions from their cream cheques, to take up ordinary shares, a like number of preference shares was cancelled. By 1943 there were no preference shareholdings. Starting off in the 1925–26 season with 58 suppliers, the output was 61 tons of butter. In 1936–37 there were 377 suppliers, and the output was 743½ tons. During the 1945–6 season, when the worst drought in the history of the company was experienced, the number of suppliers fell to 193 and the output was only 256 tons.

Our Objectives Are Clear



Employment



Health



Education



Environment



Cultural



Deliverables

1. Asset base \$20M

2. EBIT of NZ\$2M

3. 11 FTE

Product prices
\$5.00 -
\$5.70/kg

Recruit 2500
ha as planned

Recruit LUC 1
and 3 as planned

Appropriate
funding secured

Production
costs \$3.10 to
\$3.40/kg

Freedom to
operate

Attract/retrain
grown local
talent

Political stability
(iwi level)



Wool - \$2.50/kg

Wool Blankets - \$350
Natural Fibre

Align our consumer Values & Value

Wagyu - \$6/kg

Wagyu Sirloin - \$169/kg
Grass Fed/Natural



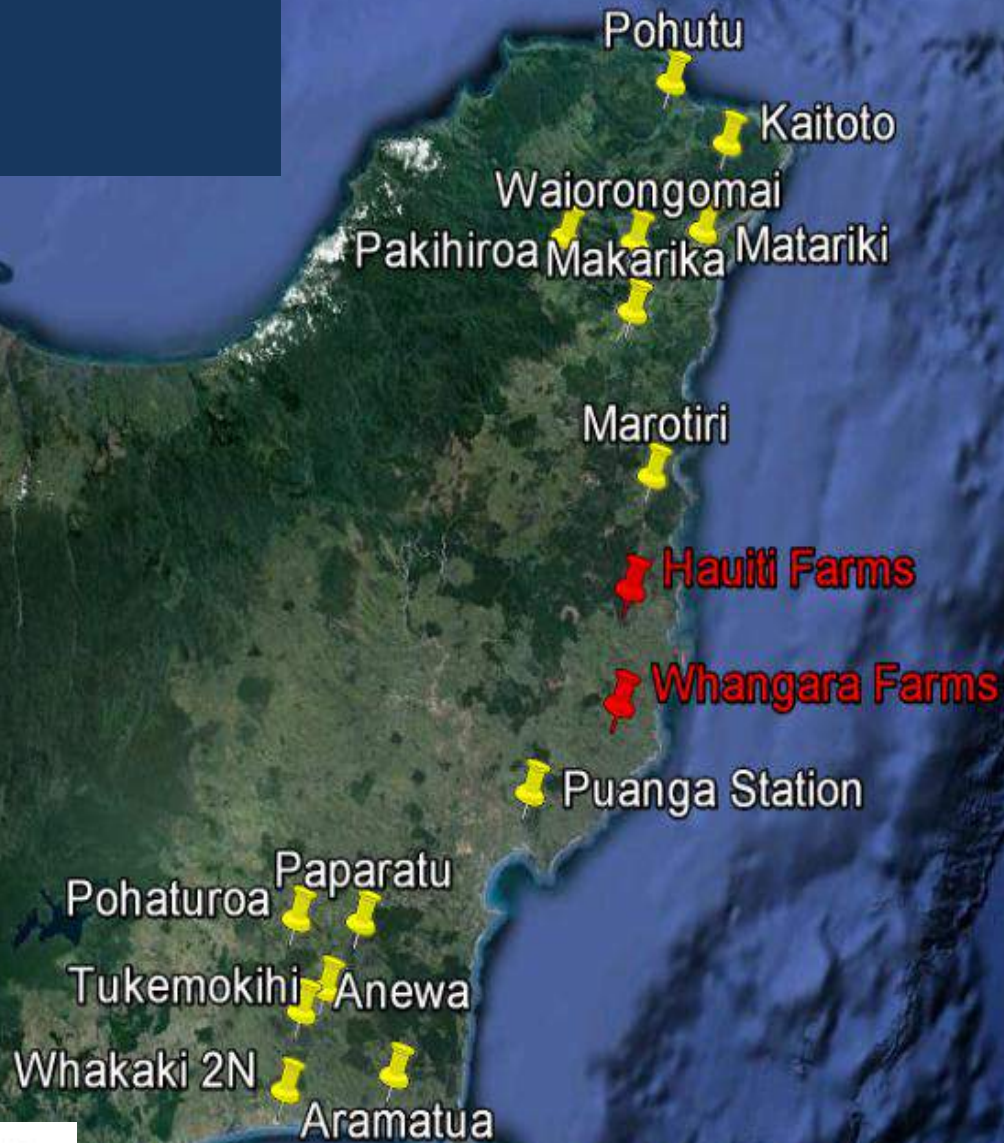
Whanaungatanga

First Light



WAKA AOTEAROA

TE HONO 



Data SIO, NOAA, U.S. Navy, NGA, GEBCO

© 2013 Cnes/Spot Image

Google earth

Strategic Issues

1. Farming Business

- Meat
- Fibre
- Real Estate
- Tourism Business

2. Efficient and predictable on farm production

- Kg prod/ha
- Climate mitigation
- Healthy environment

3. “Right” Genetics

- Merino
- Waggyu

4. Skills/Knowledge/Coaching

- Farm staff,
- Support Staff
- Governance
- Community

On Farm Response

1. Changing our “Energy Platform”

- Doug Avery - Novel Forages
- Year round “feed” supply
 - “Water” efficiency



2. Wagyu

- Firstlight
- Marble Score
 - Growth Profile
 - Supply Profile



3. Mid-micron wool

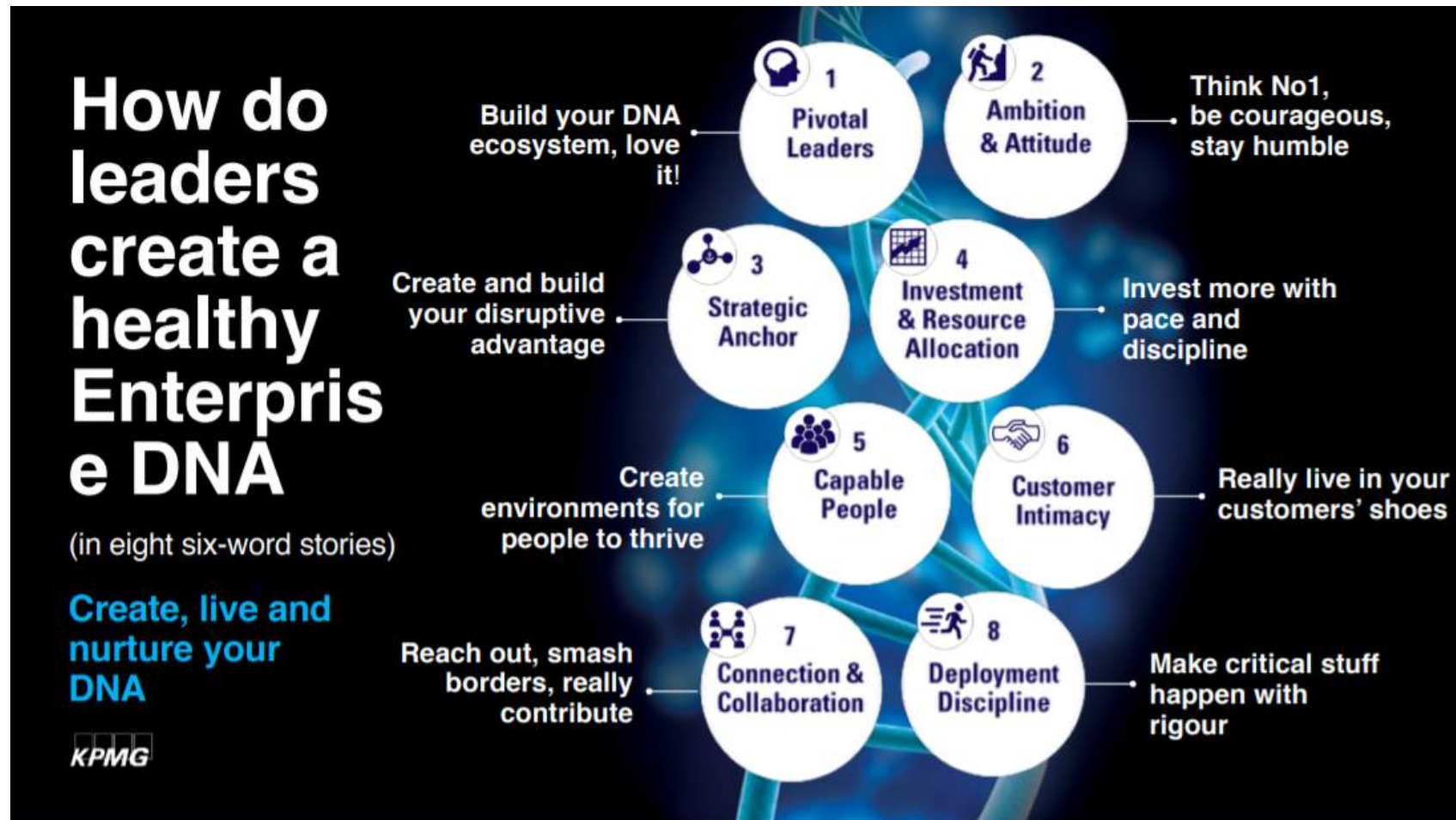
- Merino NZ
- Genetics
 - Wool Science
 - Foot rot.

4. Cross Bred Wool

- Merino NZ
- Wool “quality”
 - Assurance



Enterprise DNA – Simon Hunter KPMG



“The stone age did not end because humans ran out of stones. It ended because it was time for a fundamental rethink about how we live”

William Mc Donagh

