

Packaging

Contamination is any harmful pests or diseases, organic material in or on the container or cargo and packaging material. The packaging listed below is not limited to those provided on the charts.



SEE



CONTAIN



REPORT

Wood with an ISPM 15 stamp



Check for visible contaminants – if contaminants are found follow the contain instructions on your contamination examples.

Record it on an Air Container Report (only for air containers).
Record it on the Container Checks Portal.

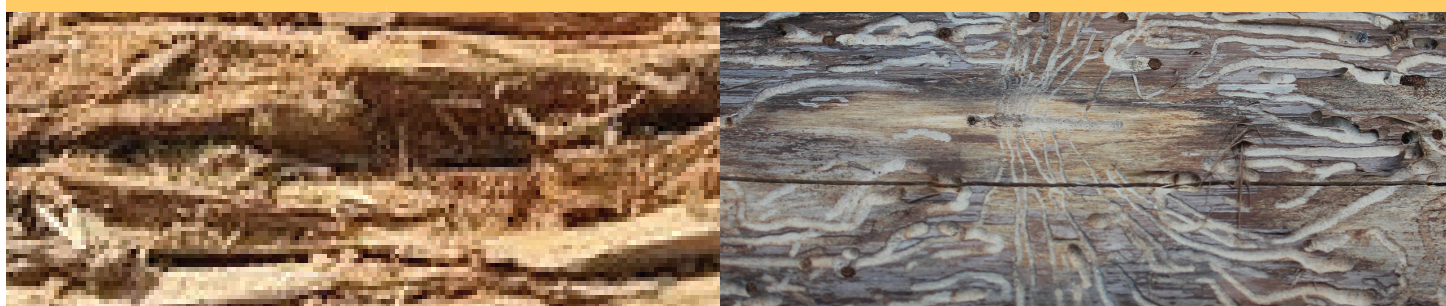
Wood with no or incorrect ISPM 15 stamp



Shrink wrap (6-sided wrap) item or secure inside the container.

Report it - Call MPI on **0800 80 99 66** as soon as possible.
Report to your TF Operator or PoFA manager/supervisor.

Wood contaminated or there are signs of insects



Spray with insecticide if there are signs of insects.
Shrink wrap (6-sided wrap) item or secure inside the container.

Record it on an Air Container Report (only for air containers).
Record it on the Container Checks Portal.

Pressed wood or non wooden packaging



Check for visible contaminants - if contaminants are found, follow the contain instructions on your contamination examples.

Follow the Contamination examples for the appropriate action to take if you find contaminants.



Biosecurity New Zealand
Ministry for Primary Industries
Manatū Ahu Matua

MPI Hotline: 0800 80 99 66

Local Office:

July 2022

Online reporting: <https://containerchecks.maf.govt.nz>

Contamination - Live Examples

Contamination is any harmful pests or diseases, organic material in or on the container or cargo and packaging material. The list of contaminants is not limited to those provided on the charts.



SEE



CONTAIN



REPORT

Animals



Contain the animal in a specific area or inside the container.

Don't put yourself in danger.

Insects and spiders



Spray with insecticide and contain it.

Ants



Spray with insecticide and close the container doors – check exterior for signs of ants and spray with insecticide.

Fungi



Shrink wrap (6-sided wrap) item or secure inside the container.

Report it - Call MPI on **0800 80 99 66** as soon as possible.

Report to your TF Operator or PoFA manager/supervisor.

Record it on an Air Container Report (only for Air Containers).

Record it on the Container Checks Portal.



Biosecurity New Zealand
Ministry for Primary Industries
Manatū Ahu Matua

MPI Hotline: 0800 80 99 66

Local Office:

July 2022

Online reporting: <https://containerchecks.maf.govt.nz>

Contamination - Dead examples

Contamination is any harmful pests or diseases, organic material in or on the container or cargo and packaging material. The list of contaminants is not limited to those provided on the charts.



SEE



CONTAIN



REPORT

Animal or animal product

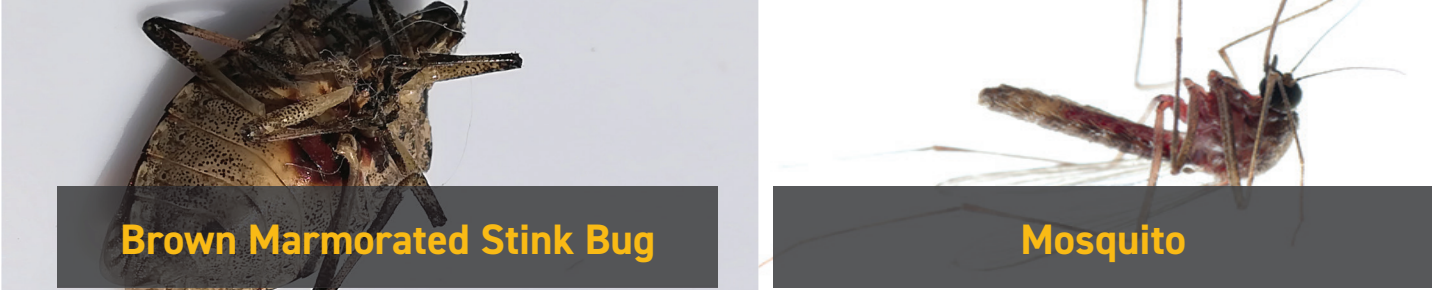


Close the container.

Report it - Call MPI on **0800 80 99 66** as soon as possible.

Report to your TF Operator or PoFA manager/supervisor.

High risk insects

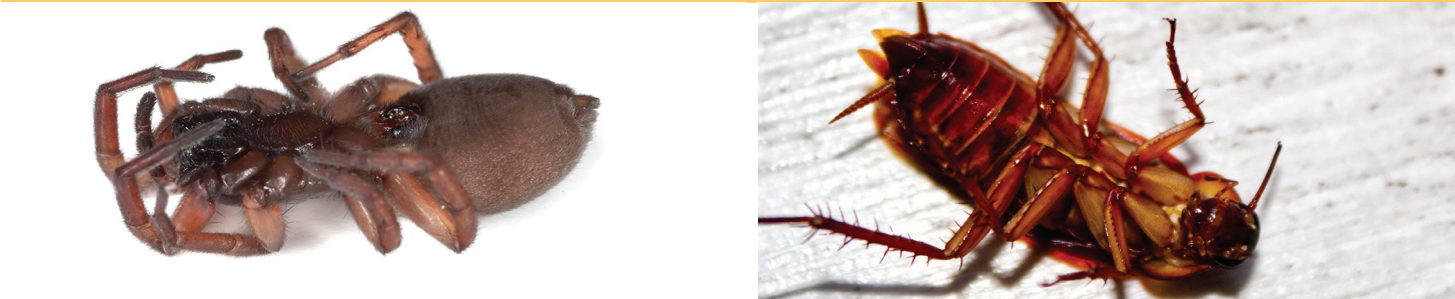


Close the container.

Record it on a Log Sheet or Air Container Report (only for air containers).

Record it on the Container Checks Portal.

Insect or spider



Contain: Put into suitable bag or other container and dispose of in the biosecurity bin.

Record it on an Air Container Report (only for air containers).

Record it on the Container Checks Portal.

Plant product or soil



Large Amount
(more than 20g):
Close the container.

Small Amount
(less than 20g):

- Use biosecurity equipment to sweep it up and dispose of in the biosecurity bin.
- Double bag if necessary.

Large Amount:
Report it - Call MPI on **0800 80 99 66** as soon as possible.
Report to your TF Operator or PoFA manager/supervisor.
Record it on an Air Container Report (only for air containers).
Record it on the Container Checks Portal.

Small Amount:
Record it on an Air Container Report (only for air containers).
Record it on the Container Checks Portal.

Note: 20 grams is approximately a small handful



Biosecurity New Zealand
Ministry for Primary Industries
Manatū Ahu Matua

MPI Hotline: 0800 80 99 66

Local Office:

July 2022

Online reporting: <https://containerchecks.maf.govt.nz>

Contamination - High Risk and Inorganic Examples

Contamination is any harmful pests or diseases, organic material in or on the container or cargo and packaging material. The list of contaminants is not limited to those provided on the charts.



SEE

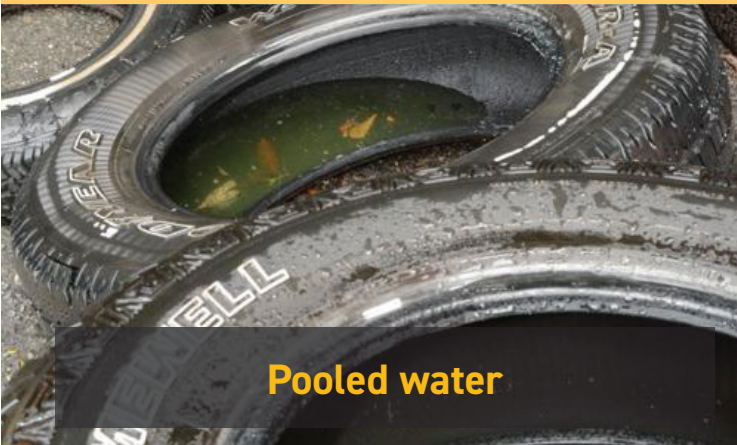


CONTAIN



REPORT

Seeds and pooled water



Pooled water



Seeds/grain

Close the container.

Report it - Call MPI on **0800 80 99 66** as soon as possible.

Report to your TF Operator or PoFA manager/supervisor.

Record it on an Air Container Report (only for Air Containers).

Record it on the Container Checks Portal.

Plant, fruit and other examples



Close the container.

Inorganic



Check for visible biosecurity contamination.

If no contaminants, **dispose** of in normal bin.

If contaminated or you are in doubt, use biosecurity equipment to **sweep** it up and **dispose** of in the biosecurity bin.

Reminder: Empty used cartons used for packaging meat, eggs, fruit and plant products should be considered as **biosecurity waste** and treated as biosecurity contamination.

Record it on an Air Container Report (only for air containers).

Record it on the Container Checks Portal.



Biosecurity New Zealand
Ministry for Primary Industries
Manatū Ahu Matua

MPI Hotline: 0800 80 99 66

Local Office:

July 2022

Online reporting: <https://containerchecks.maf.govt.nz>