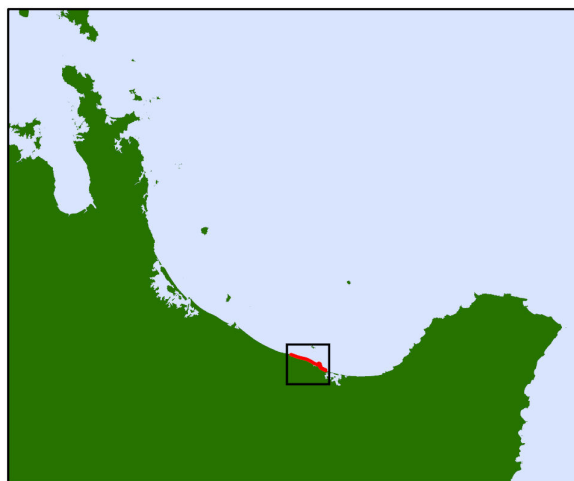
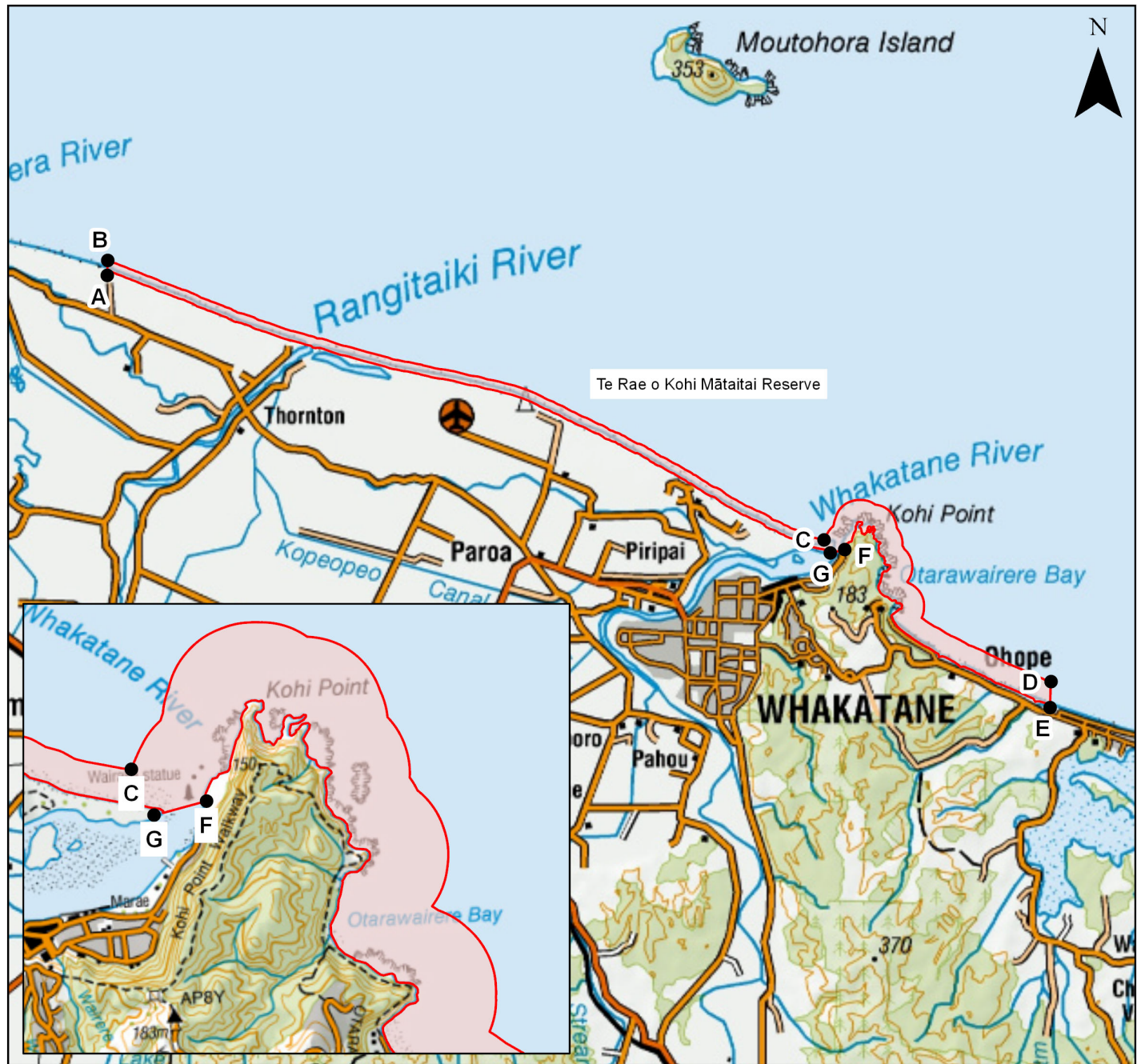


# Te Rae o Kohi Mātaitai Reserve



## Coordinates

A: 37° 53.830' S 176° 49.900' E  
 B: 37° 53.660' S 176° 49.900' E  
 C: 37° 56.492' S 177° 00.353' E  
 D: 37° 57.996' S 177° 03.700' E  
 E: 37° 58.288' S 177° 03.700' E  
 F: 37° 56.595' S 177° 00.657' E  
 G: 37° 56.639' S 177° 00.445' E

## Legend

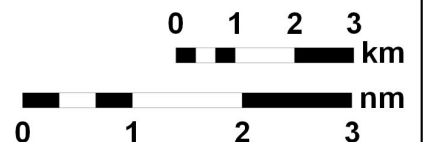
- Mātaitai reserve coordinates
- Mātaitai reserve boundary

Ref: r180082

Date: 16/04/2018

Data Coordinate System: WGS84

Produced by: Spatial Intelligence



Disclaimer: This map and all information accompanying it (the "Map") is intended to be used as a guide only, in conjunction with other data sources and methods, and should only be used for the purpose for which it was developed. The information shown in this Map is based on a summary of data obtained from various sources. While all reasonable measures have been taken to ensure the accuracy of the Map, MPI: (a) gives no warranty or representation in relation to the accuracy, completeness, reliability or fitness for purpose of the Map; and (b) accepts no liability whatsoever in relation to any loss, damage or other costs relating to any person's use of the Map, including but not limited to any compilations, derivative works or modifications of the Map. Crown copyright ©. This map is subject to Crown copyright administered by Ministry for Primary Industries (MPI).  
 Data Attribution: This map uses data sourced from LINZ under CC-BY. Service layer credits: Eagle Technology, LINZ.

Ministry for Primary Industries  
 Manatū Ahu Matua

