



Fisheries New Zealand

Tini a Tangaroa

# Rock Lobster

## Upper North Island

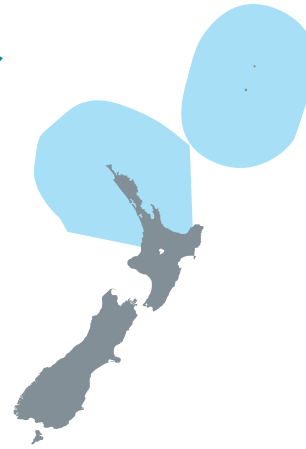


Want the rules on your phone?  
We have a FREE text service and  
a FREE app – see back page

### Catching rock lobster in the Auckland/ Kermadec area

This is a summary of the rules  
for catching spiny rock  
lobster and packhorse rock  
lobster in the following areas:

- Auckland
- Northland
- Waikato
- Coromandel
- Bay of Plenty
- Kermadec Islands.



### Sizes and limits

#### Daily limit



PER FISHER  
PER DAY  
COMBINED  
SPECIES

#### SPINY ROCK LOBSTER minimum legal size



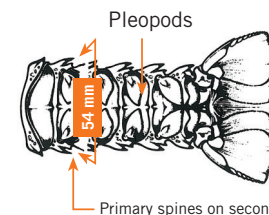
MINIMUM  
SIZE  
MALE



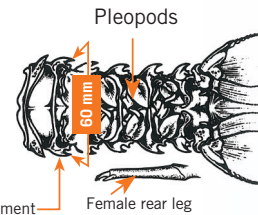
MINIMUM  
SIZE  
FEMALE



#### How to measure and determine sex



**Male 54mm**  
Single pleopods



**Female 60mm**  
Paired pleopods  
Small pincers on rear legs

#### PACKHORSE ROCK LOBSTER minimum legal size



MINIMUM  
SIZE

#### How to measure



#### Protected rock lobster you cannot take:

- Female rock lobster “in berry”  
carrying external eggs
- Soft shell stage rock lobster  
(rock lobster that has shed  
its skin)
- Unmeasurable rock lobster  
(eg: damage to the tail)
- Undersized rock lobster.



#### Prohibited gathering methods

- You cannot possess rock lobster seaward of the high water  
mark in an unmeasurable state.
- No spring loaded loops or lassos – hand operated only.
- No spears or puncturing devices – it is an offence to  
possess a speared rock lobster.
- Do not remove external eggs from any rock lobster.
- No baited nets.
- Maximum of three rock lobster pots per fisher.
- Maximum of six rock lobster pots from a vessel for two or  
more fishers.
- Visit [fisheries.govt.nz/rocklobster](https://fisheries.govt.nz/rocklobster) for more information  
on potting methods, telson clipping and the full list of  
restrictions.

## Fines and penalties

Undersized rock lobster	<b>\$250 fine</b>
1 x over the daily limit	<b>\$250 fine</b>
2 x over the daily limit	<b>\$500 fine</b>
1 x over the daily pot limit	<b>\$250 fine</b>
2 x over the daily pot limit	<b>\$500 fine</b>
Breaking protected or prohibited gathering rules	<b>\$250 fine</b>
More than 3 x over the daily limit	<b>Prosecution and/or gear forfeiture</b>

## Check the rules using our FREE services:

- **Download** our free NZ Fishing Rules app by texting the word 'app' to 9889 **OR** by scanning the QR code. The app works even when you have no coverage.
- **Free text** the name of the species you are fishing for (e.g. rock lobster) to **9889** and receive legal size and bag limit via return text.
- **Visit** [fisheries.govt.nz/rules](http://fisheries.govt.nz/rules) or pop into your local office.



This is a guide and summary only. It is not the full list of rules and restrictions. The rules may have changed since this brochure was printed, so keep up-to-date and check the rules each time you go.

**Report poaching, suspicious or illegal activity. Call 0800 4 POACHER**