

RESIDENTS IN ZONE B

If you live in this area, please do not move any home-grown fruit and vegetables out of the Controlled Areas. Please separate home-grown fruit and vegetable waste (e.g. leftovers, peel, apple cores, skins etc) from the rest of your household rubbish. General rubbish can go out with your normal rubbish collection.

Dispose of any home-grown fruit or vegetable waste in an in-sink waste disposal unit if you have one.

Or it can be disposed of in the Biosecurity New Zealand-provided wheelie bins which are in convenient locations on streets in **Zone B**.

We recommend you do not compost any home-grown fruit or vegetable waste in the meantime.

If in doubt, don't take it out.

FRUIT, VEGETABLES AND PLANTS OF CONCERN

Some of the key fruits and vegetables that the Queensland fruit fly likes and can be found on are:

All citrus fruits, all stone fruit, pears, passionfruit, feijoa, grapes, guava, blackberry, boysenberry, cape gooseberry, custard apple, quince, persimmon, crab-apple, loquat, kumquat, pumpkin, olives, avocado, tomato, eggplant, and capsicum.



WHAT SHOULD I DO IF I THINK I'VE FOUND A FRUIT FLY?

Biosecurity New Zealand is setting traps to attract any fruit flies that may be present. These traps are internationally recognised as the best method to find fruit flies. Many different insects look like fruit flies and they're very difficult to identify by untrained people. So you don't need to go looking for them.

If, however, you find eggs or larvae (baby flies – these are small worm-like bugs) inside a piece of fruit, immediately tie it inside a plastic bag and call us on:

0800 80 99 66.

And help us by co-operating with our staff to place traps on your property if they need to.

Thanks for your support in this operation.

Find full information on the Queensland fruit fly and the controls on fruit movement in Devonport at:

www.biosecurity.govt.nz/fruitfly



CONTACTS

Biosecurity New Zealand
PO Box 2526, Wellington 6140
Charles Fergusson Building, 34-38 Bowen Street
Wellington, New Zealand
www.biosecurity.govt.nz/fruitfly

February 2019

New Zealand Government



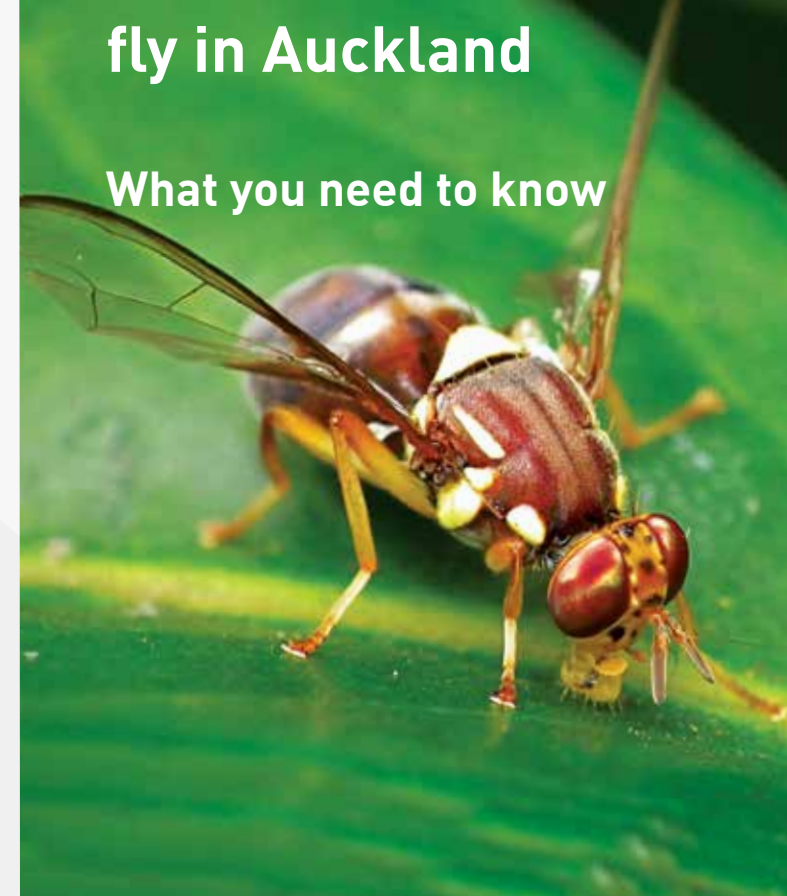
Biosecurity New Zealand

Ministry for Primary Industries

Manatū Ahu Matua

The Queensland fruit fly in Auckland

What you need to know



The Queensland fruit fly has been found in Auckland.

Fruit flies are of concern as they can damage New Zealand's fruit and vegetable crops. We need your help to prevent them spreading to fruit and vege growing areas.

IF YOU SEE SIGNS OF FRUIT FLY CALL 0800 80 99 66

HELP KEEP QUEENSLAND FRUIT FLIES OUT OF OUR CROPS

To stop fruit fly spreading, we're asking people in the affected part of Auckland to help out by not moving fruit and veges out of the areas.

We have set up what's called a Controlled Area around the fruit fly detection sites. This circular area is divided into two zones – Zone A which is the higher risk area and goes out to approximately 200 metres from the find, and Zone B which extends approximately 1.5 km, excluding some areas which do not contain fruit fly host material such as most of the harbour.

Full information on the Controlled Areas, including an interactive map is on our website:

www.biosecurity.govt.nz/fruitfly

It is important that any whole fresh fruit and vegetables (except for leafy vegetables and root vegetables) are not moved out of Zone A and that no home-grown fruit and vegetables are moved out of Zone B.

If in doubt, don't take it out.

THE DETAIL ABOUT THE FRUIT AND VEGE MOVEMENT RULES

There are some more detailed rules depending on if you live in **Zone A** or **Zone B**. Find out on our map on the website.

RESIDENTS IN ZONE A

This is the highest risk zone as it is closest to where fruit fly has been found. There are slightly stricter requirements around the handling of fruit and vegetables.

If you live in this area, please don't move any whole fresh fruit anywhere outside **Zone A**.

DISPOSAL OF RUBBISH

We ask that you separate out any fruit and vegetable waste (e.g. leftovers, peel, apple cores, skins etc) from the rest of your household rubbish. General rubbish can go out with your normal rubbish collection.

If you have an in-sink waste disposal unit, you can use this for getting rid of produce scraps. If you don't, please put produce waste in the special wheelie bin supplied by Biosecurity New Zealand. This will be safely disposed of.

You can also use the Biosecurity New Zealand bins for disposing of fruit and vegetable packing materials.



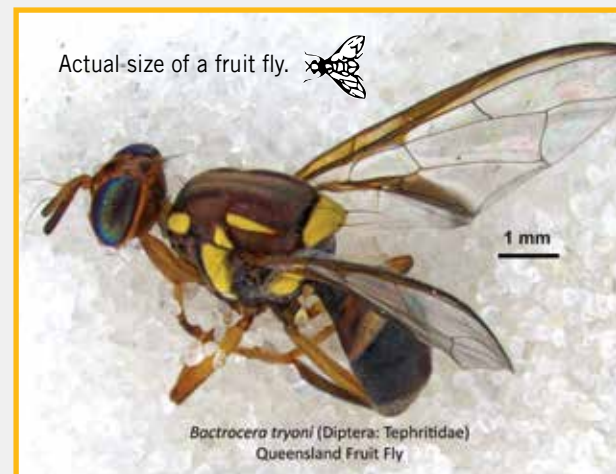
Do not compost any fruit or vegetable waste, including any garden waste and rubbish.

PRODUCE FROM YOUR OWN HOME GARDEN

Biosecurity New Zealand needs you to leave any home-grown fruit or vegetables that have fallen from trees or plants (windfall) on the ground in your garden. Biosecurity New Zealand inspectors may collect this material to check it for the presence of fruit fly.

Waste from home-grown fruit and vegetables that have been already chopped up and is free of any bugs can be disposed of in the Biosecurity New Zealand bin.

If you find eggs or larvae in home-grown produce, please tie all the fruit or vegetable material inside a plastic bag and call Biosecurity New Zealand on **0800 80 99 66**.



KO TĀTOU THIS IS US

BIOSECURITY 2025

IF YOU SEE SIGNS OF FRUIT FLY CALL 0800 80 99 66