

From: s 9(2)(a)
To: "s 9(2)(a)" <[s 9\(2\)\(a\)@seafood.org.nz](mailto:s 9(2)(a)@seafood.org.nz)>; s 9(2)(a) - Kina Industry Council; s 9(2)(a) - Kina Industry Council; s 9(2)(a) - Fisheries Inshore New Zealand; s 9(2)(a) - Fisheries Inshore NZ; s 9(2)(a) - @inshore.co.nz; s 9(2)(a) - NZ Paua Industry Council; s 9(2)(a) - PIC; s 9(2)(a) - NZRLIC; s 9(2)(a) - Southern Inshore Fisheries Management Company Ltd; s 9(2)(a)@vodafone.co.nz; s 9(2)(a)@slingshot.co.nz; s 9(2)(a) -; s 9(2)(a) - SLEel Industry Assn & Kina Industry Council s 9(2)(a) - MPI
Cc: s 9(2)(a) - MPI
Subject: Consultation: Three proposed freshwater mataitai reserves at Kaikoura
Date: Tuesday, 23 February 2016 10:40:00 AM
Attachments: [image001.png](#)
[image002.png](#)
[image003.png](#)
[Kahutara Map.jpg](#)
[Oaro Map.jpg](#)
[Tutaerua Map.jpg](#)
[Marlborough Express, Kaikoura Star - public notice fishing interests \(24....pdf](#)

TO:

Seafood New Zealand Limited
Kina Industry Council
Fisheries Inshore New Zealand
Paua Industry Council
NZ Rock Lobster Industry Council
Southern Inshore Fisheries Management Company Ltd
PauaMac3 Incorporated
Eel Enhancement Company Limited
South Island Eel Industry Association

Good morning

Following local community consultation (see below email), Te Runanga o Kaikoura Inc. did not amend their applications for three freshwater mataitai reserves at Kaikoura, covering the lower catchments of the Kahutara, Conway and Oaro Rivers. Please find attached maps of the proposed reserves.

Written submissions are now invited on the applications about the fish stocks in the areas of the proposed reserves from persons who take fish, aquatic life, or seaweed or own quota, and whose ability to take such fish, aquatic life, or seaweed or whose ownership interest in quota may be affected by the proposed reserves.

Public notices are scheduled to be published in *The Marlborough Express* and *The Kaikoura Star* newspapers on Wednesday, 24 February 2016. An advance copy of the public notice is attached. Consultation details will also be loaded onto MPI's website [here](#).

Submissions must be made by **Monday, 4 April 2016** to:

Fisheries Management - Spatial Allocations
Ministry for Primary Industries
PO Box 2526
Wellington 6140

-
Or by email to FMSubmissions@mpi.govt.nz

If you have any questions, please contact me on s 9(2)(a) or s 9(2)(a)
(Team Leader, Spatial Allocations) on s 9(2)(a) or s 9(2)(a) [@mpi.govt.nz](mailto:s 9(2)(a)@mpi.govt.nz)

Kind regards

s 9(2)(a) | Senior Analyst, Spatial Allocations
Fisheries Management | Regulation & Assurance
Ministry for Primary Industries - Manatū Ahu Matua | Pastoral House 25 The Terrace | PO Box 2526 | Wellington | New Zealand
Telephone: s 9(2)(a) | Web: www.mpi.govt.nz



From: s 9(2)(a)

Sent: Tuesday, 13 October 2015 12:46 p.m.

To: 'info@seafood.org.nz' <info@seafood.org.nz>; s 9(2)(a) @whk.co.nz' <[s 9\(2\)\(a\)@whk.co.nz](mailto:s 9(2)(a)@whk.co.nz)>;
s 9(2)(a) @xtra.co.nz' <[s 9\(2\)\(a\)@xtra.co.nz](mailto:s 9(2)(a)@xtra.co.nz)>;
s 9(2)(a) @inshore.co.nz' <[s 9\(2\)\(a\)@inshore.co.nz](mailto:s 9(2)(a)@inshore.co.nz)>; s 9(2)(a) @inshore.co.nz' <[s 9\(2\)\(a\)@inshore.co.nz](mailto:s 9(2)(a)@inshore.co.nz)>;
s 9(2)(a) @xtra.co.nz' <[s 9\(2\)\(a\)@xtra.co.nz](mailto:s 9(2)(a)@xtra.co.nz)>; s 9(2)(a) @xtra.co.nz' <[s 9\(2\)\(a\)@xtra.co.nz](mailto:s 9(2)(a)@xtra.co.nz)>;
s 9(2)(a) @seafood.co.nz' <[s 9\(2\)\(a\)@seafood.co.nz](mailto:s 9(2)(a)@seafood.co.nz)>; s 9(2)(a) @scallop.co.nz' <[s 9\(2\)\(a\)@scallop.co.nz](mailto:s 9(2)(a)@scallop.co.nz)>;
s 9(2)(a) @vodafone.co.nz' <[s 9\(2\)\(a\)@vodafone.co.nz](mailto:s 9(2)(a)@vodafone.co.nz)>;
s 9(2)(a) @clear.net.nz' <[s 9\(2\)\(a\)@clear.net.nz](mailto:s 9(2)(a)@clear.net.nz)>; s 9(2)(a) @hrm.co.nz' <[s 9\(2\)\(a\)@hrm.co.nz](mailto:s 9(2)(a)@hrm.co.nz)>;
s 9(2)(a) @chisholm.co.nz' <[s 9\(2\)\(a\)@chisholm.co.nz](mailto:s 9(2)(a)@chisholm.co.nz)>

Cc: s 9(2)(a) - MPI <[s 9\(2\)\(a\)@mpi.govt.nz](mailto:s 9(2)(a)@mpi.govt.nz)>

Subject: FYI - three proposed freshwater mataitai reserves at Kaikoura

TO:

Seafood New Zealand Limited
Kina Industry Council
Fisheries Inshore New Zealand
Paua Industry Council
NZ Rock Lobster Industry Council
Southern Inshore Fisheries Management Company Ltd
PauaMac3 Incorporated
Eel Enhancement Company Limited
South Island Eel Industry Association

Good afternoon

The Ministry for Primary Industries has received three freshwater mataitai reserve applications for Kaikoura, covering the lower catchments of the Kahutara, Conway and Oaro Rivers. Please find attached maps of the proposed reserves.

Notification of a public meeting and an invitation for local community submissions will be placed in *The Marlborough Express* on 14 October 2014 and 7 November 2015, and in *The Kaikoura Star* on 4 November 2015. An advance copy of the public notice is attached. The local community consultation period will close on 18 December 2015. The public meeting will be held at 7pm at the Takahanga Marae, Takahanga Terrace, Kaikoura, on 12 November 2015. Consultation details will also be loaded onto MPI's website [here](#), in the Fisheries section.

A further public notice will be placed in *The Marlborough Express* and *The Kaikoura Star* after the local community consultation period has ended, inviting written submissions from persons who take fish, aquatic life, or seaweed or own quota, and whose ability to take such fish, aquatic life, or seaweed or whose ownership interest in quota may be affected by the proposed mataitai reserve.

I will contact you again just prior to those public notices being placed.

Kind regards



 | Senior Analyst, Spatial Allocations

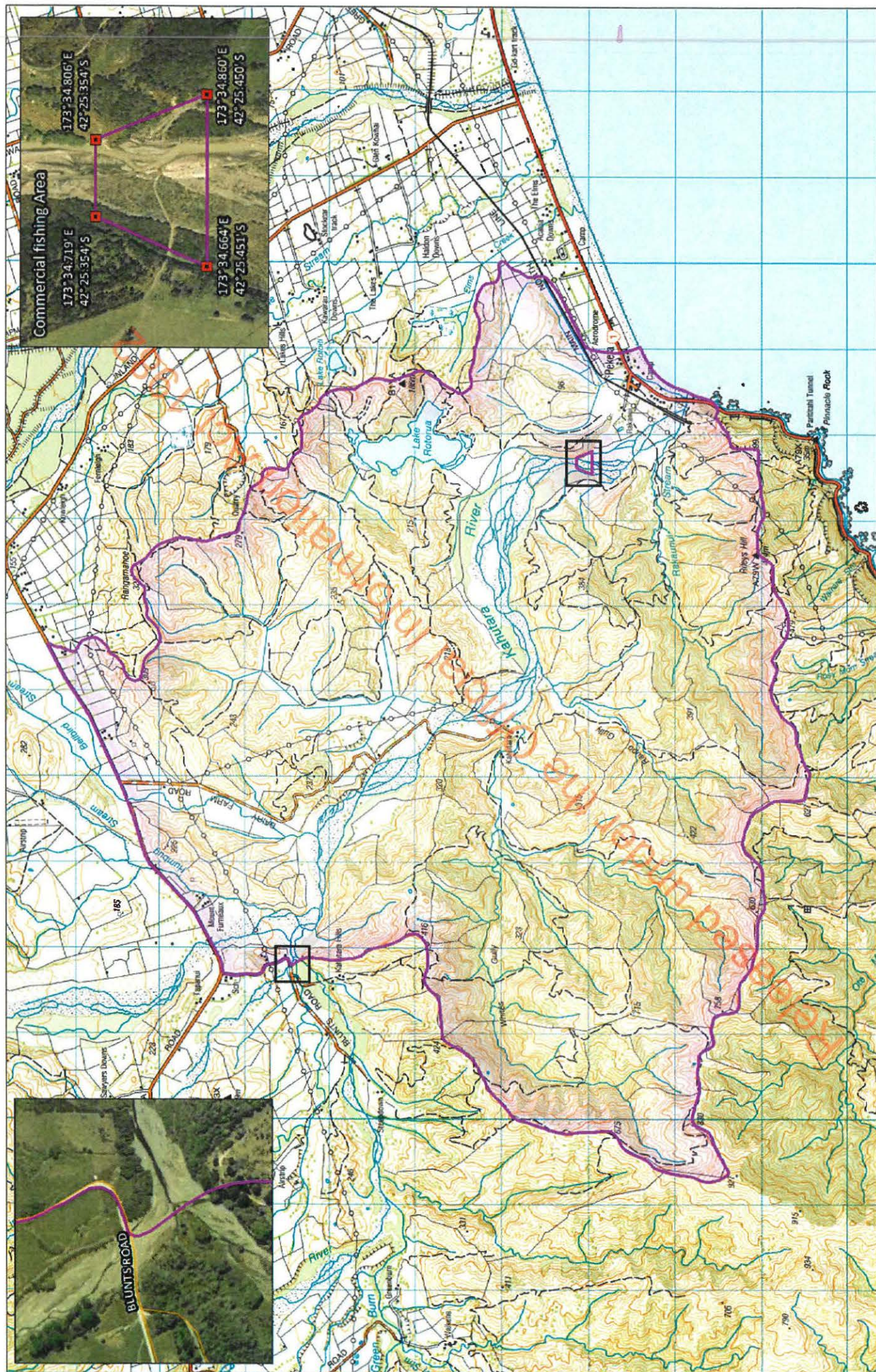
Fisheries Management | Regulation & Assurance

Ministry for Primary Industries - Manatū Ahu Matua | Pastoral House 25 The Terrace | PO Box 2526 | Wellington | New Zealand

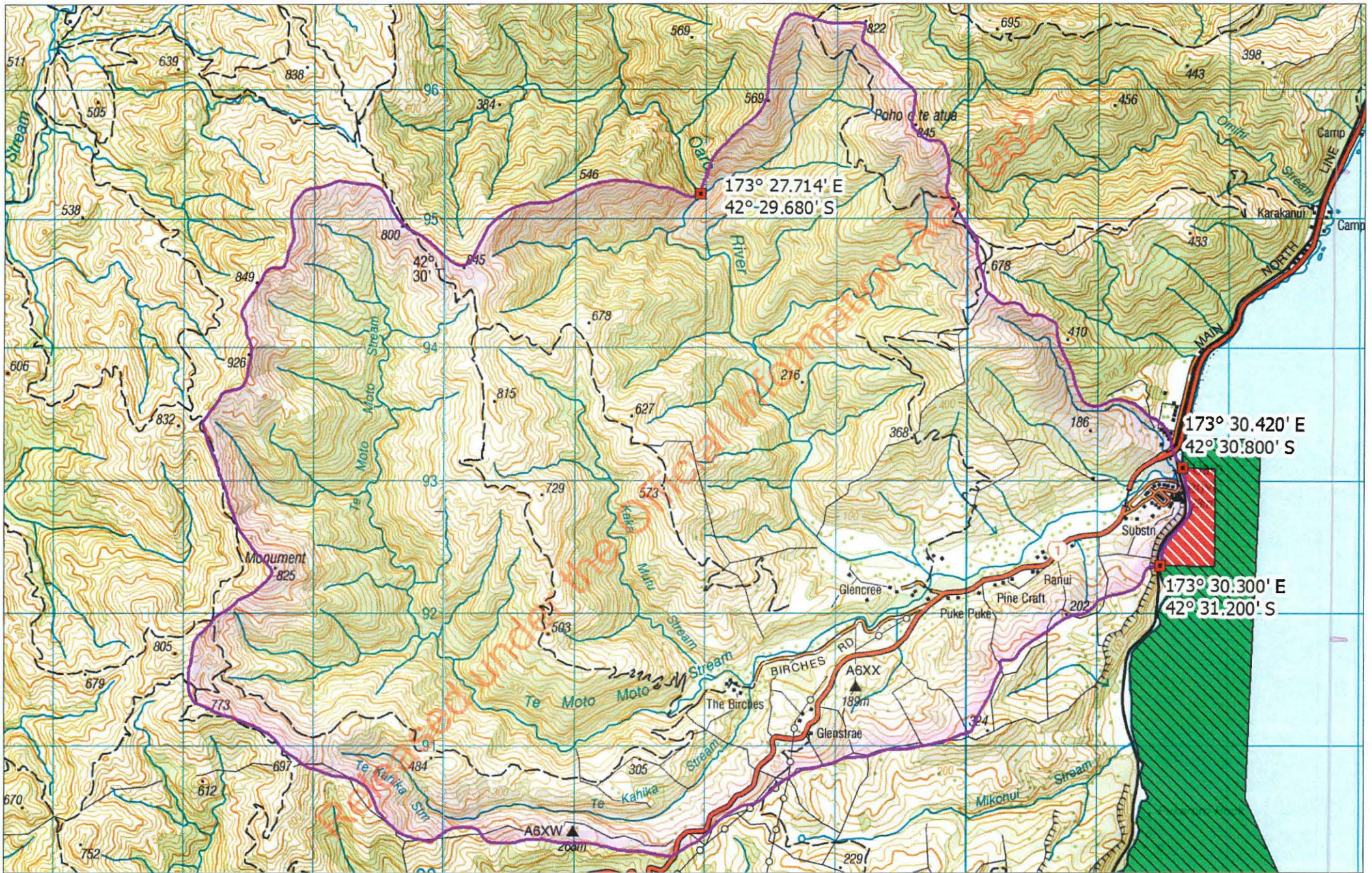
Telephone: s 9(2)(a) | Web: www.mpi.govt.nz



Released under the Official Information Act 1982



Kahutara Mātaaitai application







CALL FOR SUBMISSIONS

Three mātaītai reserve applications at Kaikoura

Pursuant to Regulation 17 of the Fisheries (South Island Customary Fishing) Regulations 1999, Te Rūnanga o Kaikōura Inc have applied for three new mātaītai reserves at Kaikoura.

Proposed Kahutara mātaītai reserve

The fisheries waters in the lower reaches of the Kahutara River catchment, from the river mouth inland to Blunts Road and Inland Kaikoura Road, including Lake Rotorua; Rakaunui Stream and Humbug Stream, but excluding an area within the boundaries commencing at 42°25.451'S 173°34.664'E, then proceeding east to a point at 42°25.450'S 173°34.860'E, then proceeding in a north-northwest direction to a point at 42°25.354'S 173°34.806'E, then proceeding due west to a point at 42°25.354'S 173°34.719'E, and then proceeding in a south-southwest direction to the point of commencement.

Proposed Tūtaeputaputa mātaītai reserve

The fisheries waters in the lower reaches of the Conway River catchment, from the river mouth inland to the Inland Kaikoura Road, including the Conway River and its tributaries; the Limestone, Spey, Blackburn, Stag, Goat Hills, Campbell and Waingarō Streams; the Charwell and Gelt Rivers; Birthday Creek and Weka Brook.

Proposed extension to the Oaro Mātaītai Reserve

The fisheries waters in the lower reaches of the Oaro River catchment, commencing at the northwestern and southwestern boundaries of the existing Oaro Mātaītai Reserve, and proceeding inland to include the Oaro Lagoon; the Kaka Mutu, Te Moto Moto and Te Kahika Streams; and the lower reaches of the Oaro River up to a point at 42°29.680'S 173°27.714'E.

A mātaītai reserve is an identified traditional fishing ground in fisheries waters established for the purpose of customary food gathering.

Te Rūnanga o Kaikōura Inc and the Ministry for Primary Industries have previously consulted with the local community on the applications.

Pursuant to Regulation 19(5), this notice outlines the details of the applications and invites written submissions about the fish stocks in the areas specified in the applications from persons who take fish, aquatic life, or seaweed or own quota, and whose ability to take such fish, aquatic life, or seaweed or whose ownership interest in quota may be affected by the proposed mātaītai reserves. Submissions must be made by Monday, 4 April 2016 to: Fisheries Management - Spatial Allocations, Ministry for Primary Industries, PO Box 2526, Wellington 6140, or by email to FMSubmissions@mpi.govt.nz

Further information about mātaītai reserves, including a map of these proposed mātaītai reserves, is available on the MPI website (www.mpi.govt.nz), or by contacting MPI at the above address.

Note: All submissions are subject to the Official Information Act 1982 ("the OIA") and can be released (along with the personal details of the submitter) under the OIA. If you have specific reasons for wanting to have your submission or personal details withheld, please set out your reasons in the submission. MPI will consider those reasons when making any assessment for the release of submissions if requested under the OIA.