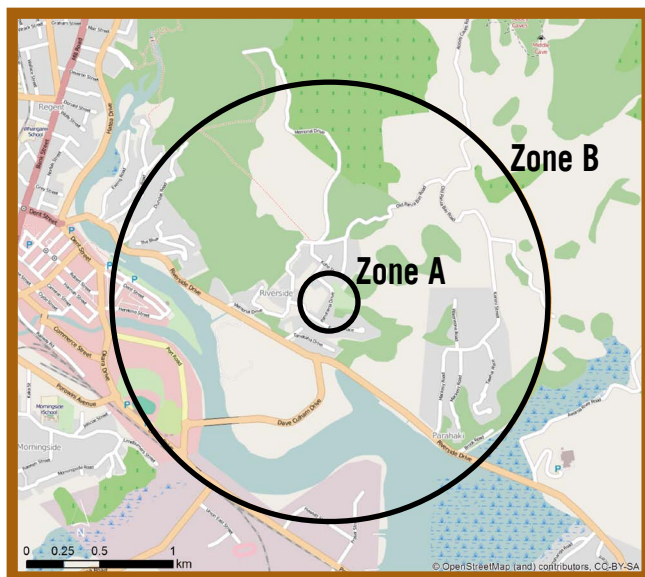


HELP KEEP QUEENSLAND FRUIT FLIES OUT OF OUR CROPS

In case there are other fruit flies out there, we're asking people in the affected part of Whangarei to help out by not moving fruit and veges too far from home.

We have set up what's called a Controlled Area around where the original fruit fly was found. This circular area is divided into two zones – **Zone A** which goes from the location where the one fly was found, out to 200 metres and **Zone B** which goes out 1.5 km from the original find.



More information is on our website:
www.mpi.govt.nz.

It is important that any whole fresh fruit and vegetables (except for leafy vegetables and root vegetables) are not moved out of this Controlled Area.

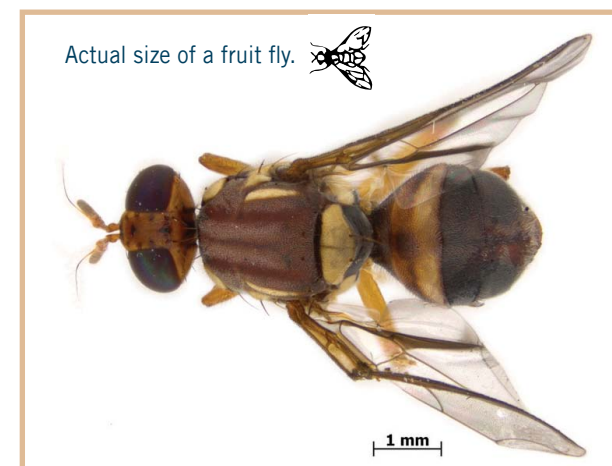
THE DETAIL ABOUT THE FRUIT AND VEGE MOVEMENT RULES

There are some more detailed rules depending on if you live in **Zone A** or **Zone B**.

If you live in Zone A, please don't move any whole fresh fruit or vegetable matter anywhere outside **Zone A**. You are, however, allowed to move any fruit or vege scraps (e.g. apple cores, orange and potato peelings) to special bins we have provided in the area.

If you are in the wider **Zone B**, please don't move any whole fresh fruit or vegetables (except for leafy vegetables and root vegetables) outside of the wider Controlled Area boundaries. You can still move these items within **Zone B**.

There is no problem with taking any fruit or veges into the controlled area from outside.



DISPOSAL OF FRUIT AND VEGETABLE SCRAPS AND GARDEN WASTE

We ask that you separate out any fruit and vegetable waste from the rest of your household rubbish. General rubbish can go out with the regular rubbish collection.

If you have a sink waste disposal unit, please use this for getting rid of fruit and vegetable waste.

If not, please use the bins provided throughout the Controlled Area for all fruit and vege scraps.

Please also use the bins for waste soil and planting medium attached to, or in the vicinity of, fruit bearing trees and packaging materials associated with fruit and vegetables, as above.

We also recommend you avoid composting any fruit or vegetable waste.

IF YOU SEE SIGNS OF FRUIT FLY CALL 0800 80 99 66



PERMITS TO MOVE FRUIT AND VEGETABLES OUTSIDE THE CONTROLLED AREA

If you need to move fruit or veges outside the Controlled Area – for example, if you run a dairy, produce shop or supermarket – you can get a permit from MPI.

Phone us on **0800 80 99 66**.

FRUIT, VEGETABLES AND PLANTS OF CONCERN

Some of the key fruits and vegetables that the Queensland fruit fly likes and can be found on are:

All citrus fruits, all stone fruit, pears, passionfruit, feijoa, grapes, guava, blackberry, boysenberry, cape gooseberry, custard apple, quince, persimmon, crab-apple, loquat, kumquat, pumpkin, olives, avocado, tomato, eggplant, and capsicum.



WHAT SHOULD I DO IF I THINK I'VE FOUND A FRUIT FLY?

MPI is setting traps to attract any fruit flies that may be present. These traps are internationally recognised as the best method to find fruit flies. Many different insects look like fruit flies and they're very difficult to identify by untrained people. So you don't need to go looking for them.

If, however, you find eggs or larvae (baby flies – these are small worm-like bugs) inside a piece of fruit, immediately tie it inside a plastic bag and call us on:

0800 80 99 66.

And help us by allowing our staff to place traps on your property if they need to.

Find full information on the Queensland fruit fly and the controls on fruit movement in Whangarei at:
www.mpi.govt.nz

CONTACTS

Ministry for Primary Industries
PO Box 2526, Wellington 6140
Pastoral House, 25 The Terrace
Wellington, New Zealand
www.mpi.govt.nz

April 2014

New Zealand Government

The Queensland fruit fly in Whangarei

What you need to know



A single male Queensland fruit fly was found in a surveillance trap in Parihaka, Whangarei in April 2014.

Fruit flies are of concern as they can damage New Zealand's fruit and vegetable crops.

The Ministry for Primary Industries is working to find out if there are any further fruit flies in the area and if there are, to prevent them spreading to fruit and vege growing areas. We need your help.