



Fruit fly not actual size

Restrictions on fruit and vegetable movements are still in place

The Ministry for Primary Industries (MPI) has been working in your area since February to eradicate the Queensland fruit fly. This insect is a serious pest of horticulture and home gardens and if it established here, would severely affect our international trade in fruit and vegetables.

It has now been almost two months since any sign of a fruit fly has been found. This is good news but it does not mean the job is done.

Fruit flies are not active in the cooler months, so while we expect that our controls have been successful, we can't be sure until the spring when any flies that may remain become active again.

MPI aims to locate and kill any fruit flies present in Auckland and to reduce the risk of them spreading out of the area, through placing controls on the movement of fruit and vegetables. Those controls remain in force.

Our field operations will slow down over winter, but they won't stop. Our surveillance traps will stay out to attract and catch any flies that may be active.

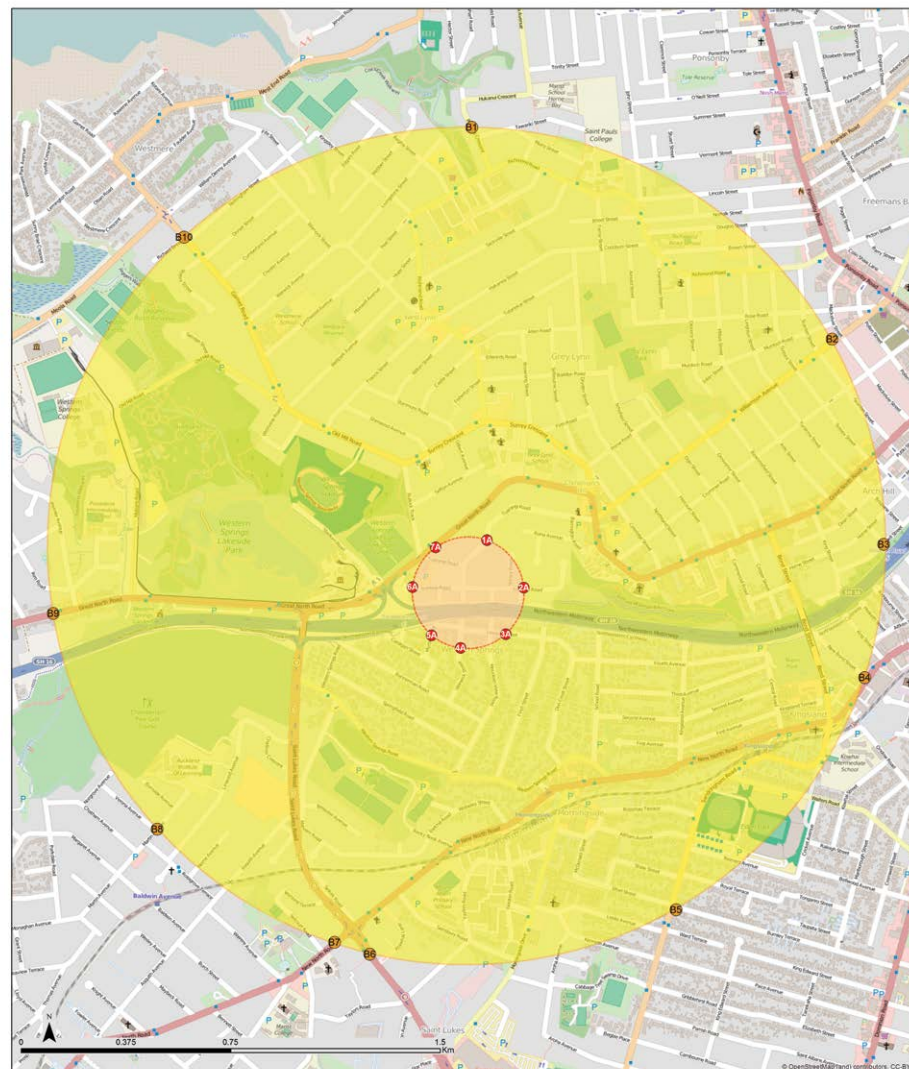
The Ministry and New Zealand's horticultural growers very much appreciate your efforts to support this operation, despite the inconvenience. Thank you. Please continue to work with us and be mindful that the rules on fruit and vegetable movement are still in place.

A refresher on the movement controls

If you live in the A Zone – please don't move any whole fresh fruit or vegetable matter anywhere outside of the A Zone. You have your own disposal bin to get rid of any produce rubbish.

If you live in the B Zone – please don't move produce outside of the Controlled Area. You can dispose of windfall fruit from your garden in MPI bins.

There are a number of fruit and vegetable stores inside the Controlled Area that MPI has approved to sell produce that can be moved out of the zones. Full information is at: www.mpi.govt.nz



The higher risk A Zone is now smaller

MPI is very confident about the exact location of the fruit fly population and as a result, has safely reduced the size of the **A Zone**. Some properties that were in the former high risk zone are now in the **B Zone**, meaning they are no longer subject to the toughest fruit movement restrictions.

Map of the new zones

See exactly where your property is on the interactive map at www.mpi.govt.nz and click on the fruit fly image.

Other changes to the work programme over winter

- » MPI has been applying insecticide bait to fruiting trees throughout the Controlled Area to attract and kill adult flies. This baiting will stop at the end of May but may need to re-start in spring based on trapping results and technical advice.
- » MPI staff will continue to collect windfall fruit from properties in the A Zone but this will reduce from weekly to fortnightly.
- » The network of fruit fly traps will remain out over winter even though flies are usually not active at this time of year. These traps will be checked slightly less frequently and if there are any flies still out there, they will be found.
- » The wheelie bins will not be emptied as frequently, but will continue to be cleared at least once a week. Some properties that have moved into the B Zone will no longer have their own individual bin, and will need to use a conveniently located shared bin.



Fruit fly facts at a glance

Since the first fly was found in Grey Lynn:

- » Over 30,000 pieces of fruit (3 tonnes) have been collected and sliced by MPI's scientists looking for eggs and larvae.
- » Around 210,500 kg of waste has been collected from within the Controlled Area.

What should I do if I think I've found a fruit fly?

MPI's traps will attract any fruit flies that may be present. These traps are internationally recognised as the best method to find fruit flies. Many different insects look like fruit flies and they're very difficult to identify by untrained people. So you don't need to go looking for them.

It is unlikely that you will find a fruit fly in the wild. However, if you find eggs or larvae (baby flies – these are small worm-like bugs) inside a piece of fruit, immediately tie it inside a plastic bag and call us on:

0800 80 99 66

Thanks for your support in this operation which is vital and very much appreciated.

Find full information on the Queensland fruit fly and the controls on fruit movement in Auckland at:

www.mpi.govt.nz

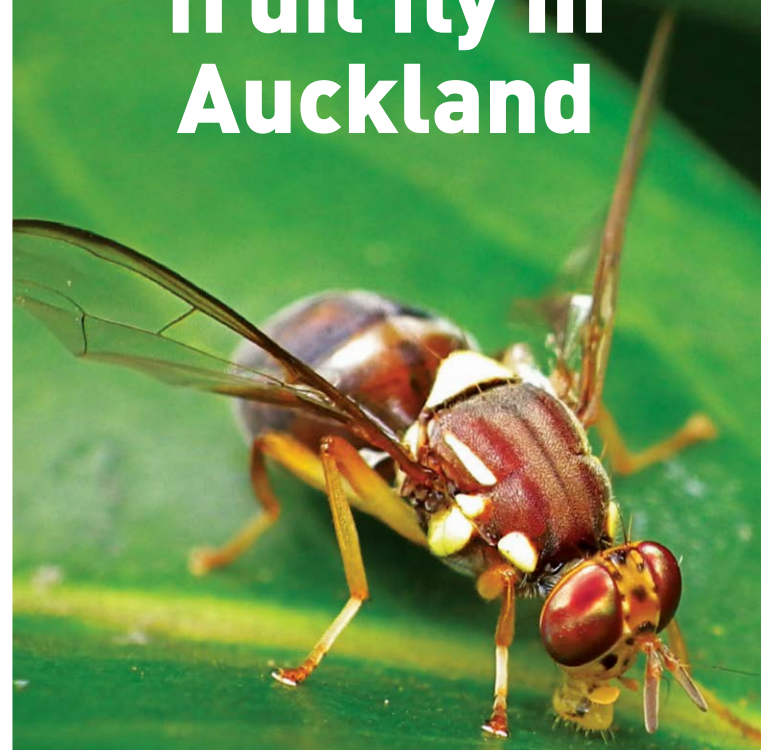
Ministry for Primary Industries
PO Box 2526, Wellington 6140
Pastoral House, 25 The Terrace
Wellington, New Zealand
www.mpi.govt.nz
May 2015

New Zealand Government

Ministry for Primary Industries
Manatū Ahu Matua



Queensland fruit fly in Auckland



OPERATIONS OVER WINTER
We still need your help

IF YOU SEE SIGNS OF FRUIT FLY CALL 0800 80 99 66