



Know the boundaries – before you go fishing

Please refer to the maps in this brochure and their corresponding co-ordinates so you know the clear boundaries of where the rules apply within the Akaroa Taiāpure.

Remember, if you are fishing outside of the Akaroa Taiāpure area then the South-east Area Amateur Fishing rules apply.

Set Netting

There is a ban on set netting in Akaroa Harbour to protect endangered Hector’s dolphins.

Recreational fishers may use flatfish set nets between 1 April and 30 September (both days inclusive) inside a line Green Point to Ohae Point (see map 3).



Map 3: Flatfish set netting area within the Akaroa Taiāpure.

Only a flatfish net is permitted to be used. That means a net:

- no more than 9 meshes deep;
- with a monofilament diameter no more than 0.35mm;
- with a mesh size no less than 100mm;
- that is anchored at each end;
- that does not exceed a total length of 60 metres;
- that has buoys that are clearly marked with the users name.

Poacher Prevention

MPI's Fisheries Compliance is responsible for protecting local fisheries and stopping illegal activities such as poaching. To do this, please report any suspicious or illegal activity in your area.

If you see people acting illegally, taking more than their daily limit, taking undersized fish or selling or trading their catch, please report it. Any information provided stays completely confidential.

Report poaching, suspicious or illegal activity – call 0800 4 POACHER (0800 476 224).

New Zealand’s Fishing Rules at your Fingertips

This brochure is a summary of the recreational fishing rules for the Akaroa Taiāpure Area. It is a guide only and may not include all local restrictions and rules or any changes made since it was printed. To keep up to date, check the rules each time you fish. It is illegal to sell or trade your catch.

Check the rules using our FREE services:

- **Download** our free NZ Fishing Rules app by texting the word ‘app’ to 9889. The app works even when you have no coverage.
- **Free text** the name of the species you are fishing for (e.g. rock lobster) to **9889** and receive legal size and bag limit via return text.
- Visit www.fisheries.govt.nz/rules
- Email recfishingteam@mpi.govt.nz



MPI Fisheries – Northland
MPI Fisheries – Nelson/Marlborough/Kaikoura
MPI Fisheries – Canterbury/Westland
MPI Fisheries – Otago/Southland

Contact your Local Office

Christchurch Office (03) 339 3662 14 Sir William Pickering Drive, Christchurch
Timaru Office (03) 684 2615 21 Ritchie Street, Timaru



Amateur Regulations AKAROA TAIĀPURE

Effective from: July 2020. Subject to change without notice.

UPDATED PĀUA BAG AND ACCUMULATION LIMITS

Want the rules on your phone?
We have a FREE text service and a FREE app.
Check the back for details.

The main purpose of a taiāpure is to manage, conserve and enhance fisheries resources for present and future generations to use and enjoy.

The Akaroa Taiāpure Management Committee was appointed by the Minister for Primary Industries, and includes tangata whenua, the Akaroa community and local organisations.

Chairman of the committee, George Tikao, sums up the way forward: “The vision for the taiāpure is to develop a world-class, community-based fisheries management model that actively enhances a sustainable fishery in Akaroa Harbour.” All fishing can continue in the Akaroa Taiāpure according to the rules and regulations outlined in this brochure.

A Guide

Taking onboard recommendations made by the committee, this brochure outlines rules specific to the Akaroa Taiāpure.

For more detail on amateur fishing restrictions, contact your nearest Ministry for Primary Industries office or check the website www.fisheries.govt.nz/rules – click on the map of your fishing area to check the rules.

For full details of the legislation, please visit www.legislation.govt.nz

IMPORTANT: This brochure should also be read together with the *South-east Area Amateur Fishing Rules* brochure so you are clear on all the boundaries and rules of the Akaroa Taiāpure *and* its surrounding areas. (These brochures are available from your nearest Fisheries New Zealand office or online).

Finfish

Know the rules

The table below sets out the maximum daily number of particular species of fish and the combined daily number of finfish that may be taken or possessed within the Akaroa Taiāpure.

The taking or possessing of seahorses from the Akaroa Taiāpure is prohibited.

The taking or possessing of shellfish from the Onawe Peninsula area of the Akaroa Taiāpure is prohibited.

Fishing outside of the Akaroa Taiāpure

If you want to transport fish caught outside of the Akaroa Taiāpure back through the taiāpure, and the quantities exceed Akaroa Taiāpure maximum allowable daily limits, the onus is on you to provide evidence of the location of where the fish was lawfully taken.

Finfish Species	Max daily limit (per person)	Minimum fish length (cm)
Blue cod	2	33
Blue moki	3	40
Butterfish	3	35
Elephant fish	5	n/a
Flatfish (except sand flounder)	10	25
Red cod	3	25
Rig	5	n/a
Sand flounder	10	23
Sea perch	3	n/a
School shark	5	n/a
Trumpeter	3	35

NB: Fishers can take or possess a combined maximum of 10 finfish on any one day. This is the maximum limit for all species combined.

Shellfish

No person shall take any shellfish within the Onawe Peninsula (part of the Akaroa Taiāpure).

Outside of the Onawe Peninsula area, but still within the Akaroa Taiāpure, the limits in the table below apply.

Pāua accumulation limits

When fishing for two or more days, you may possess a maximum of 10 pāua or 1.25kgs pāua meat, provided you can prove they were taken lawfully and you did not take more than the daily limit on any one day.

Shellfish species	Max daily limit (per person)	Minimum fish length (mm)
Catseye	20	n/a
Cockle	20	n/a
Kina	50	n/a
Mussel	50	n/a
Pāua (ordinary)	5	125
Pāua (Yellow foot)	5	80
All others combined	50	n/a

NB: The maximum combined daily number of shellfish applies to all species not specifically named above and includes all crabs, limpets, periwinkles, whelks, barnacles and freshwater crayfish.

Rock lobster

Rock lobster species	Max daily limit (per fisher)	Minimum tail width at 2 nd abdominal segment, spine tip to tip
Rock lobster	3	Male 54mm Female 60mm

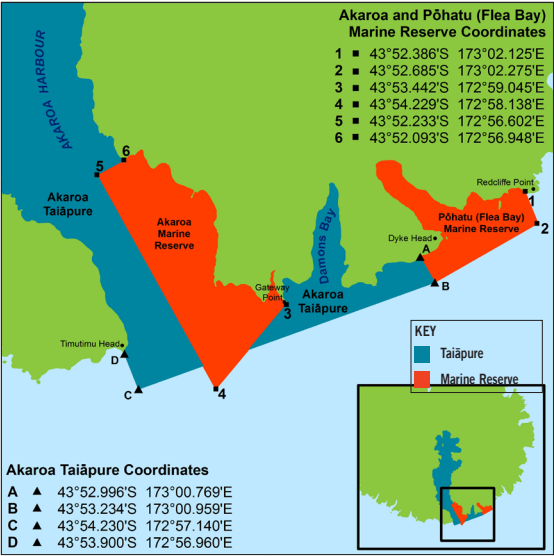
Closed and Restricted Areas

Akaroa Taiāpure extension

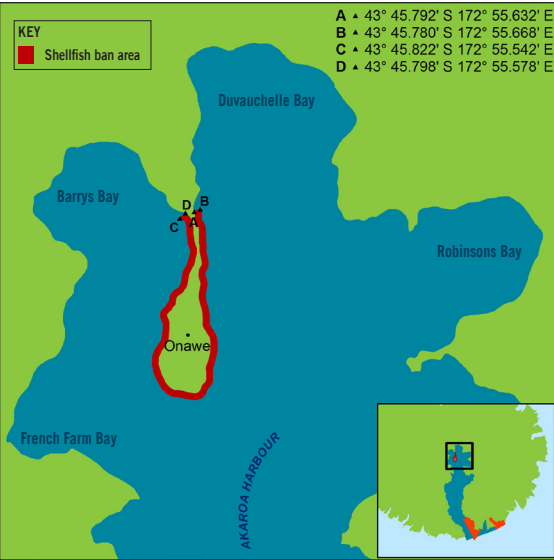
From 20th December 2015, the Akaroa Taiāpure was extended to include the 55 hectares between Elephant Head and Manukatahi Stream. The current Akaroa Taiāpure fishing rules and regulations apply to the extended area.

Akaroa and Pohatu Marine Reserves

A marine reserve is an area of ocean and shore that is protected under the Marine Reserves Act. The Akaroa and Pohatu Marine Reserves are closed to all fishing.



Map 1: Akaroa Taiāpure, Akaroa Marine Reserve and Pohatu Marine Reserve boundaries and coordinates.



Map 2: Shellfish ban Onawe Peninsula, within Akaroa Harbour Taiāpure.